



DVB-PC TV Stars

User's Guide Part 1
Installation

User's Guide Part 2
Setup4PC/Server4PC

User's Guide Part 3
DVBViewer TE

This manual covers the following products:

TechniSat AirStar 2 PCI / USB
IP reception

Document Release Date: August 07
Copyright © TechniSat Digital GmbH All Rights Reserved

Version 4.4.1

TechniSat DVB-PC TV Stars - Users Guide Part 2: Setup4PC/Server4PC

Table of contents

Chapter 1: Introduction	1
Defining the TechniSat DVB-PC TV Stars	1
Defining AirStar 2 PCI/USB	1
Using IP services with a DVB-PC TV Star Device.....	1
Using printed help.....	1
User's guide conventions.....	1
User task summary.....	2
Step one: Configuring Setup4PC and Server4PC for data reception	2
Chapter 2: Describing the functionalities	3
Overview	3
AirStar2 PCI/USB	4
Open Setup4PC	4
Configuring location settings.....	5
Managing channels.....	6
Add channels manually:.....	6
Scan for channels.....	7
Managing programs.....	7
Managing data services.....	8
Other options of Setup4PC/Server4PC.....	9

Chapter 1: Introduction

Defining the TechniSat DVB-PC TV Stars

Defining AirStar 2 PCI/USB

AirStar 2 PCI is a small board that is plugged into a PCI slot of your computer. The AirStar USB is the USB version that is connected to a USB1.1 port of your computer. It gives you unprecedented access to any free to air broadcast digital terrestrial television channel (DVB-T).

Using IP services with a DVB-PC TV Star Device

The TechniSat DVB-PC TV Stars products will request all information by ground-based Internet. In response the requested data will be delivered using satellite, broadband cable or terrestrial systems at high speed.

Using printed help

The DVB-PC TV Stars product range includes the 4 parts of the Users Guide (Part 1: "Installation" / Part 2: "Setup4PC/Server4PC" / Part 3: "DVBViewer TE" / Part 4: "Troubleshooting").

User's guide conventions

For clarity, the User's Guide employs the following conventions:

1. Navigation paths are represented as follows:

"Start" => "Programs" => "TechniSat DVB" => "Setup4PC"

The path shown in this example launches Setup4PC

2. Pay attention to the following:



This icon designates a note, which is an important information to the description above.



This icon designates a warning, which is an important information to the description above.

3. The DVB-PC TV Stars TV application "DVBViewer TechniSat Edition" is designated in the following as "DVBViewer TE"

User task summary

Steps to perform basic user tasks are summarized below.

Step one: Configuring Setup4PC and Server4PC for data reception

Follow the steps to learn about the functionality of Setup4PC and Server4PC for your device (AirStar 2 PCI, AirStar USB)

Chapter 2: Describing the functionalities

Overview

This chapter explains the functionalities of Setup4PC/Server4PC in combination with your DVB-PC TV device and which settings you have to make to setup for data reception.



Server4PC is necessary for data reception only. If you want to know, how to configure software for TV reception and not know how to setup your card for data reception, continue with the third part of this manual.



If you operate a number of TechniSat DVB-PC TV Stars devices, there will appear one Server4PC icon for each device installed to the system. The data service handling of all devices is independent from each other.



The MAC address of each device assigned to a Server4PC icon is shown within Setup4PC device selection and as hover tool tip text of Server4PC. Each TechniSat DVB-PC TV stars will have one IP address assigned to.



For data reception services, like "Internet via broadband" you also need provider or service specific software, which receives the data from the DVB device. This software is not included in the DVB-PC TV Stars package. For further information contact your Internet service provider.



For most Internet services you need a return channel, which can be a PSTN, ISDN, GSM/GPRS/UMTS or network connection to the Internet. Ask your Internet service provider for further information about the return channel, which is required for the service.



Data reception is not possible if you are using Server4PC and the TV application DVBCViewer at the same time. If you want to receive data, you have to close the active DVB TV application.

AirStar2 PCI/USB

Open Setup4PC

You reach Setup4PC by right clicking onto the Server4PC Icon and select the Setup4PC option:



Figure 2.1: Server4PC Context Menu



Possible states of Server4PC (AirStar 2 TV PCI / AirStar USB)



Channel tuned. The Server4PC is ready to receive data using the settings of the selected data profile or TV/radio using the running TV application.



No channel tuned. This might be possible, if no channel is tuned by a TV application, no data profile is selected or no data profile is available.



No TechniSat DVB-PC TV Stars device available. In this case you should check, if the driver for the PCI card or USB box is installed correctly and if the device is working properly.

Now, the Setup4PC window appears:

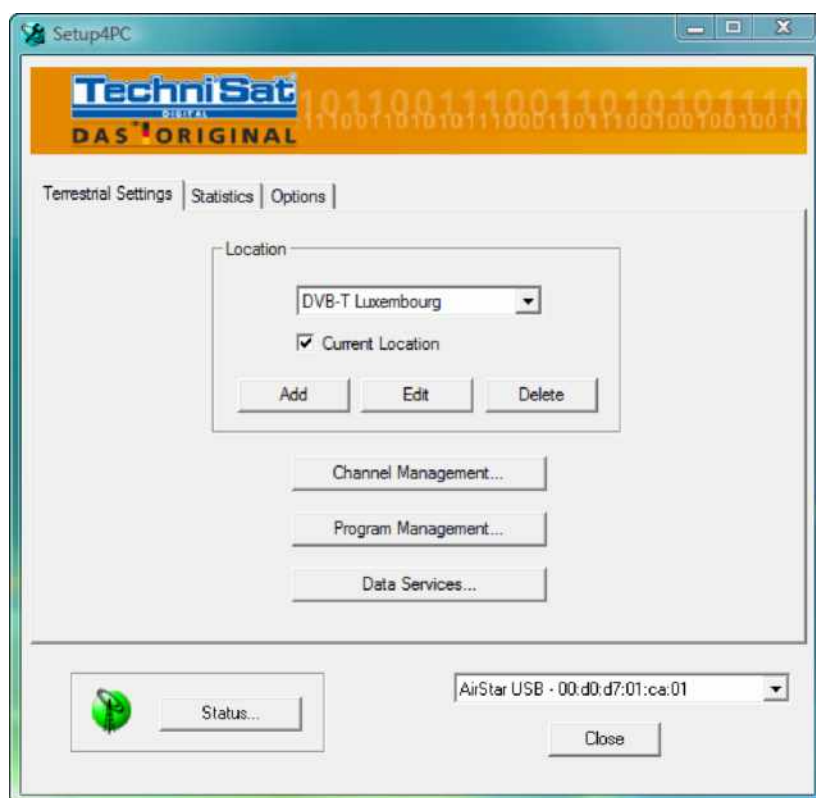


Figure 2.2: Setup4PC - Terrestrial Settings

Configuring location settings

The first option you have to configure, is your location by clicking “Add”.

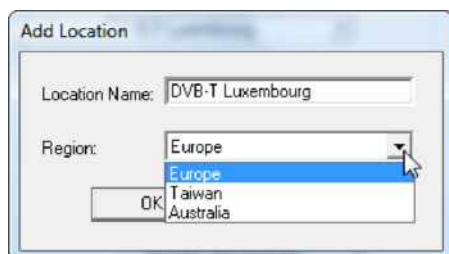


Figure 2.3: Add Location

Enter your location name and choose your region. Press “OK” to confirm the settings.

Managing channels

Next step is the configuration of the channel management. Therefore you have to use the “Channel Management” button in Setup4PC Terrestrial Settings.

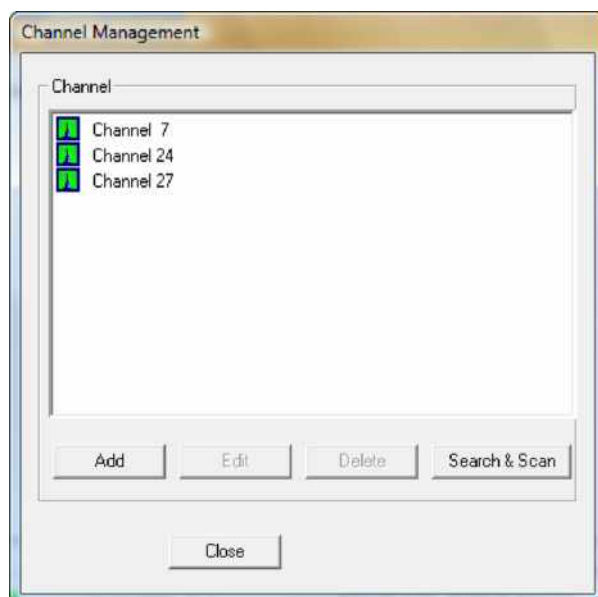


Figure 2.4: Channel Management

There are two ways of adding new channels: adding the channels manually and by automatic scan.

Adding channels manually:

Click the “Add” button on channel management and this window appears:

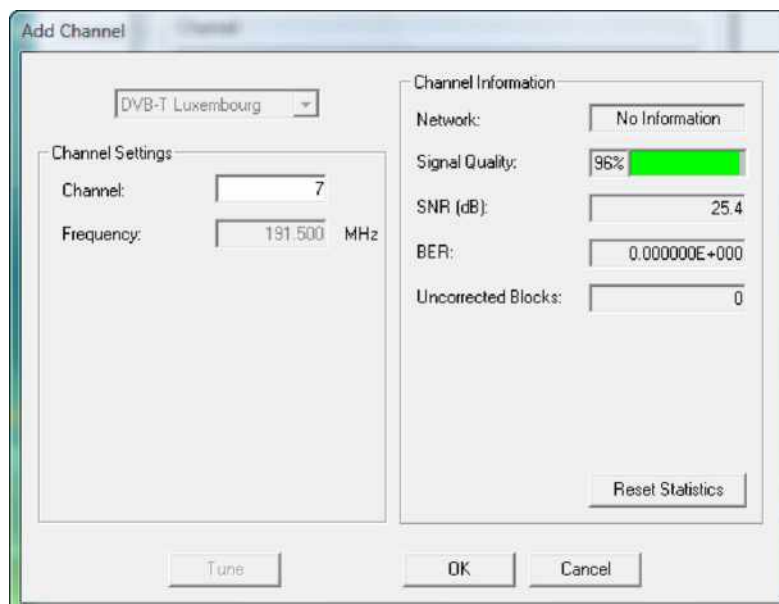


Figure 2.5: Add Channel

Enter the channel number of the channel you would like to add and click “OK” to confirm.

Scan for channels

In this case you have to press “Search & Scan” to start the process.

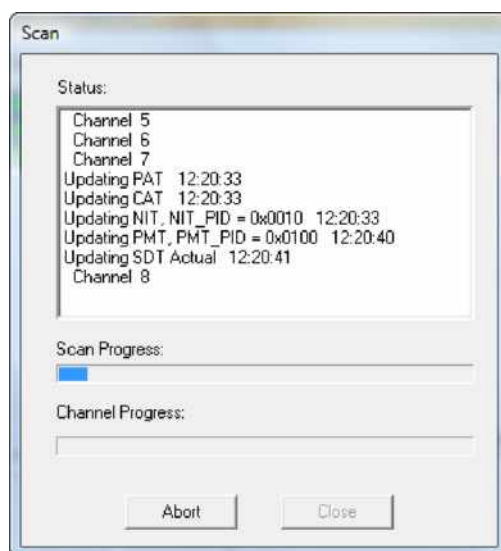


Figure 2.6: Scan

This process can take several minutes. After the process has finished all found channels will be listed in the transponder list.

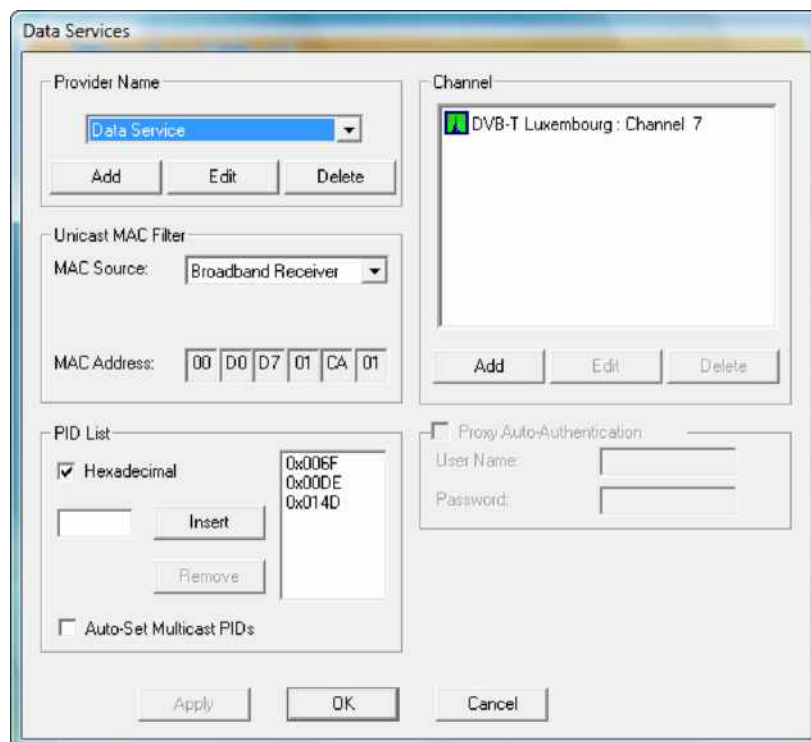
Managing programs



The option “Program Management” is not necessary for data reception. If you want to configure transponders for the purpose of watching TV and radio programs, you have to configure those options in the TV/PVR application DVBViewer TE. If you change the settings in Setup4PC, it has no effect on DVBViewer TE or any other applications.

Managing data services

As the last step, you have to perform the configuration of the data service. To configure those options click onto the button “Data Services” in “Setup4PC Terrestrial Settings”.



The screenshot shows the "Data Services" configuration window. It is divided into several sections:

- Provider Name:** A dropdown menu showing "Data Service". Below it are "Add", "Edit", and "Delete" buttons.
- Unicast MAC Filter:** A section with a "MAC Source" dropdown set to "Broadband Receiver". Below it is a "MAC Address" field with the value "00 D0 D7 01 CA 01".
- PID List:** A section with a "Hexadecimal" checkbox checked. To its right is a list of PID values: "0x006F", "0x00DE", and "0x014D". Below the list are "Insert" and "Remove" buttons. At the bottom of this section is an unchecked checkbox labeled "Auto-Set Multicast PIDs".
- Channel:** A list box showing "DVB-T Luxembourg : Channel 7". Below it are "Add", "Edit", and "Delete" buttons.
- Proxy Auto-Authentication:** A section with a "Proxy Auto-Authentication" checkbox unchecked. Below it are "User Name:" and "Password:" labels with corresponding input fields.

At the bottom of the window are "Apply", "OK", and "Cancel" buttons.

Figure 2.7: Data Services

In this tab you have to enter a service name using the “Add” button. After this you have to assign the transponder the service is hosted on. The last step is to enter the service PID’s. Please pay attention to the numbering format of the PID values. They can be provided in decimal numbering (0-9) or in hexadecimal numbering (0-F). You can switch between both numbering systems by enabling/disabling the checkbox “Hexadecimal”. The PID values will be transferred into the other format while changing this option.

You can get such data service information from your service provider.

Other options of Setup4PC/Server4PC

Channel Status:

On this tab the current used channel settings and signal quality information are shown. Use this tab for checking the functionality of your wiring.

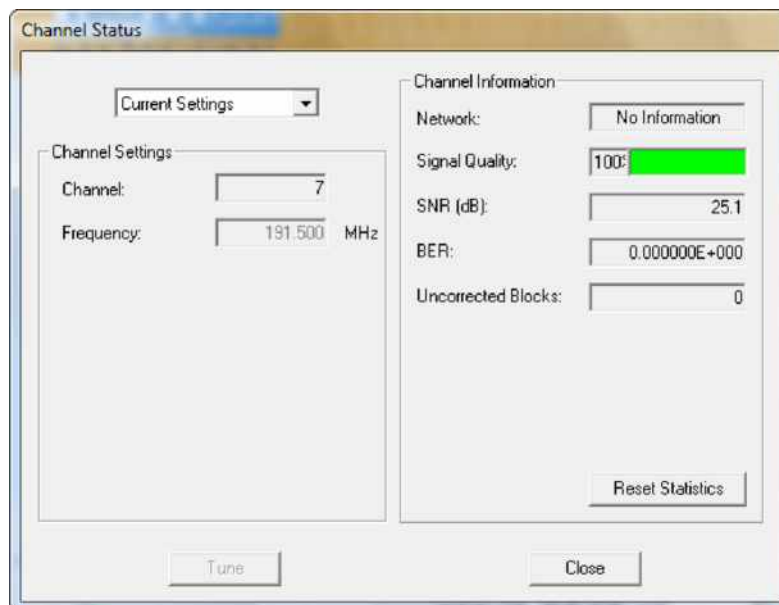


Figure 2.8: Channel Status

Statistics:

To debug data reception, use the tab statistics. Here all assigned MAC addresses; active PID's and the data rates are shown.

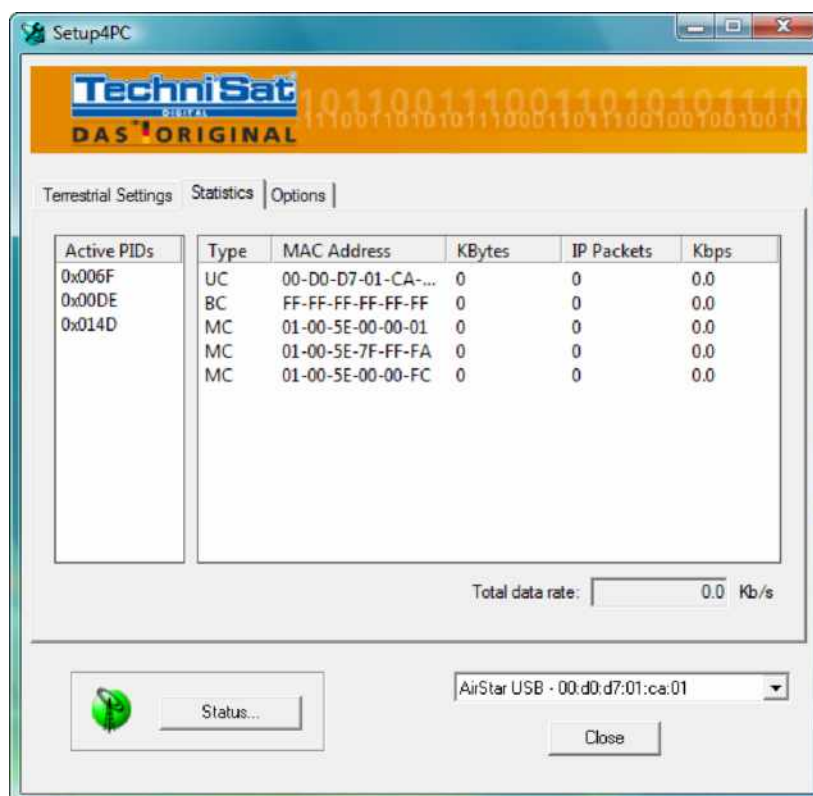


Figure 2.9: Setup4PC - Statistics