

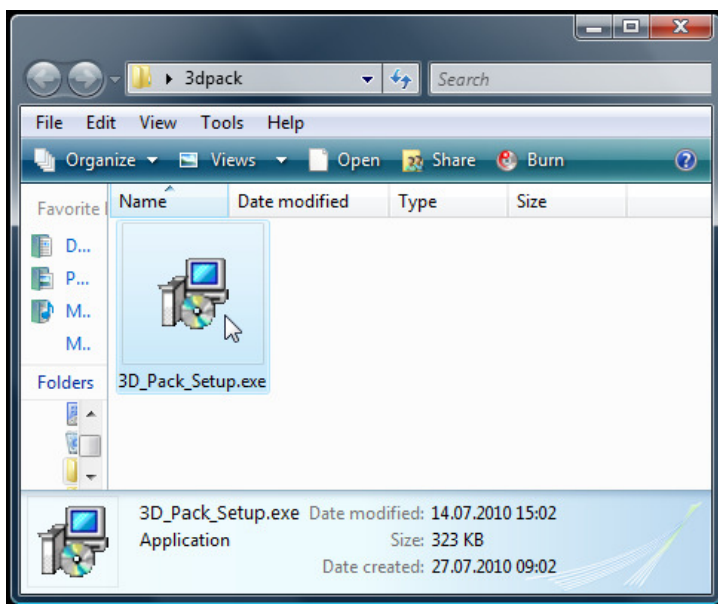
DVBViewer TE2 3D Pack

- Installation Guide -

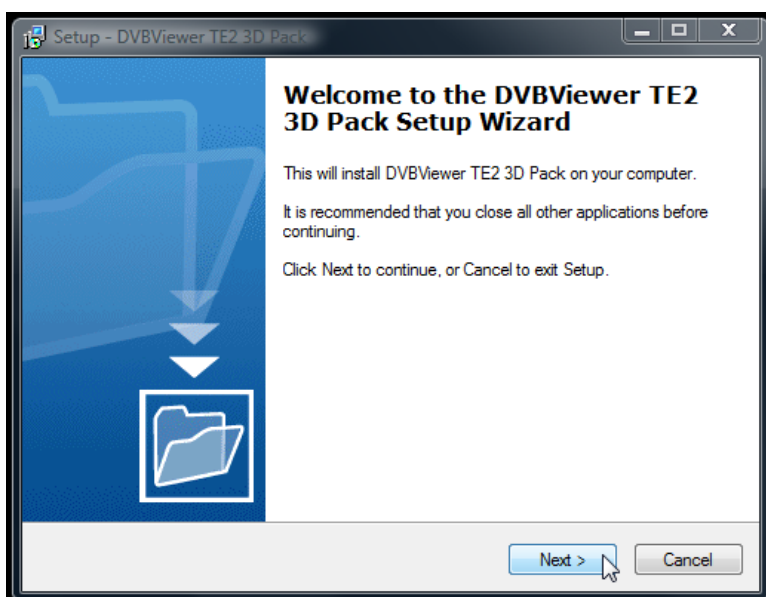
1) Requirements for using the DVBViewer TE2 3D pack:

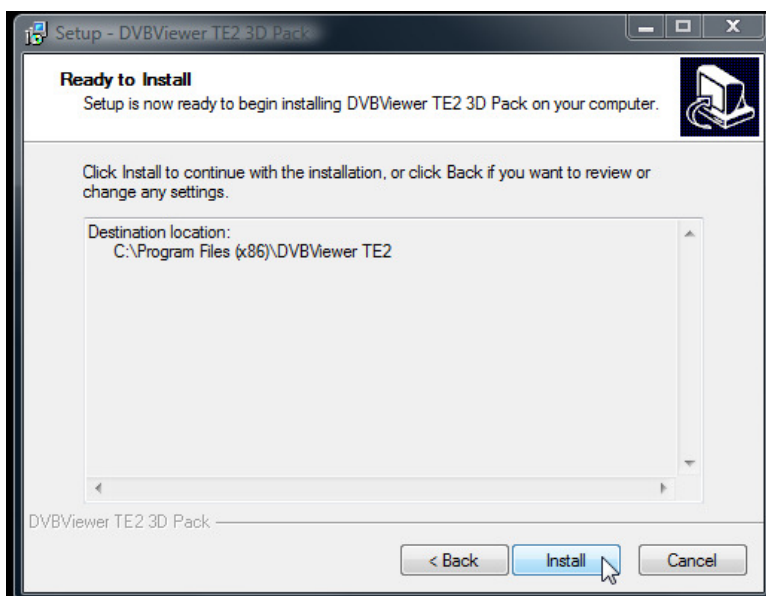
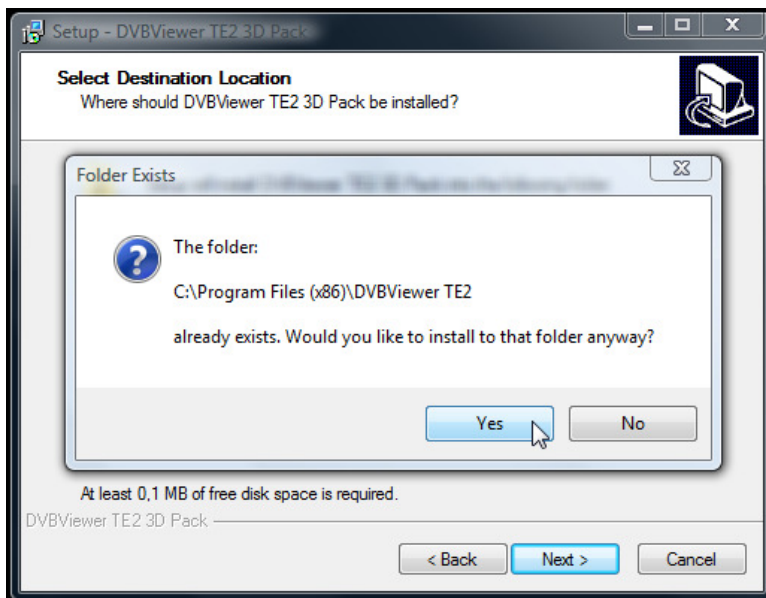
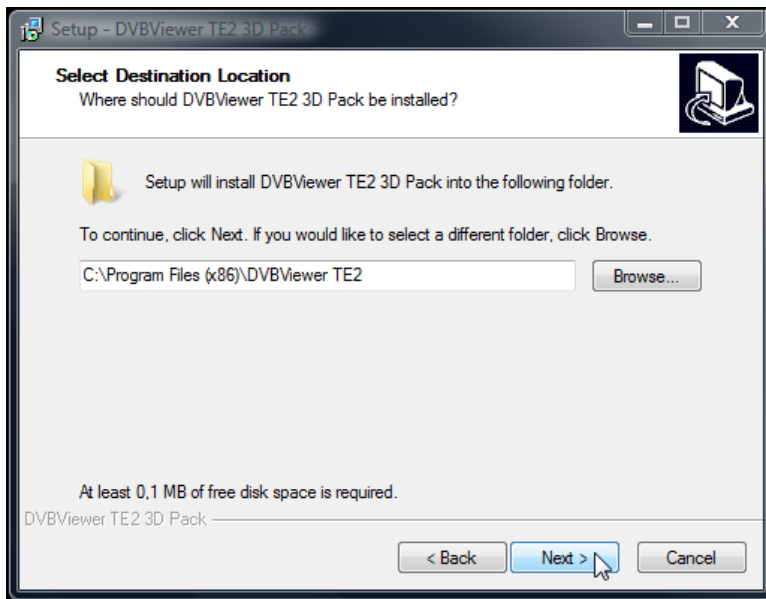
- anaglyph glasses (red-cyan)
- 3D TV channel available
- TechniSat hardware installed
- DVBViewer TE2 installed

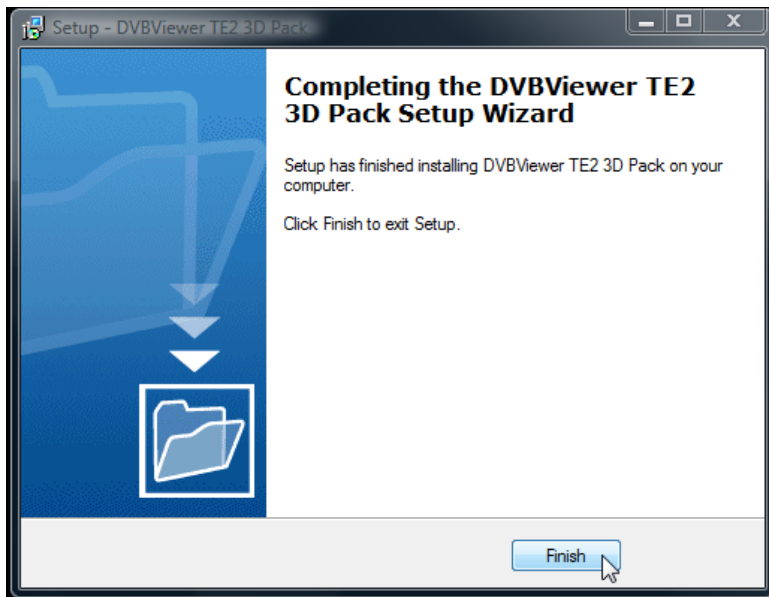
2) Download and execute the 3D pack installer:



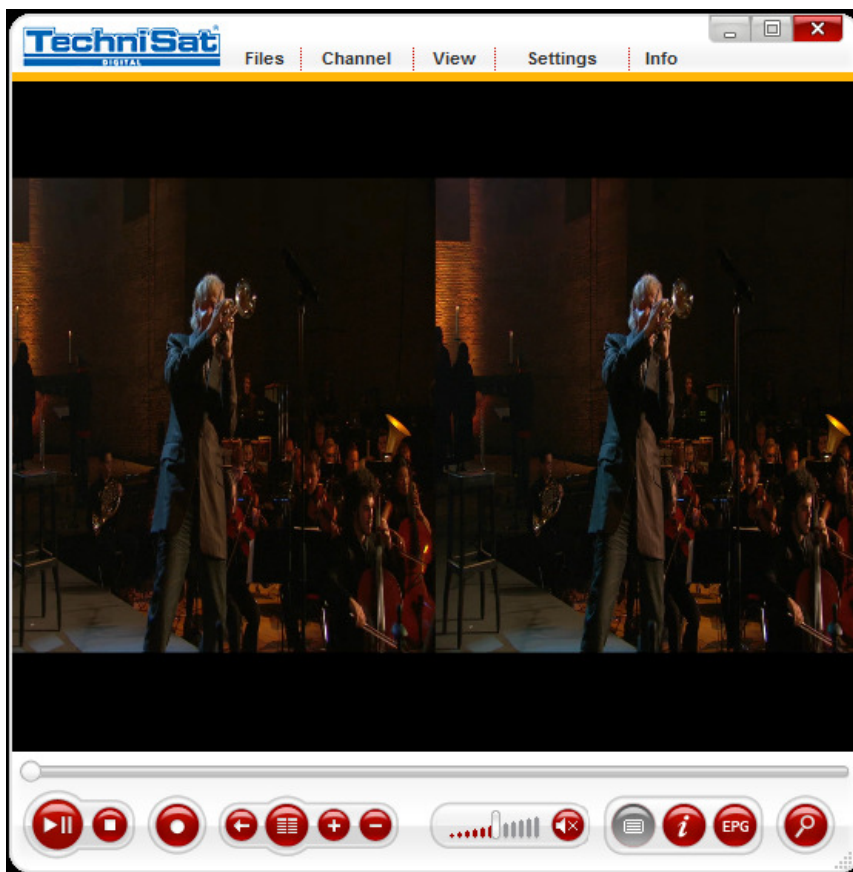
3) Follow the installer instructions:



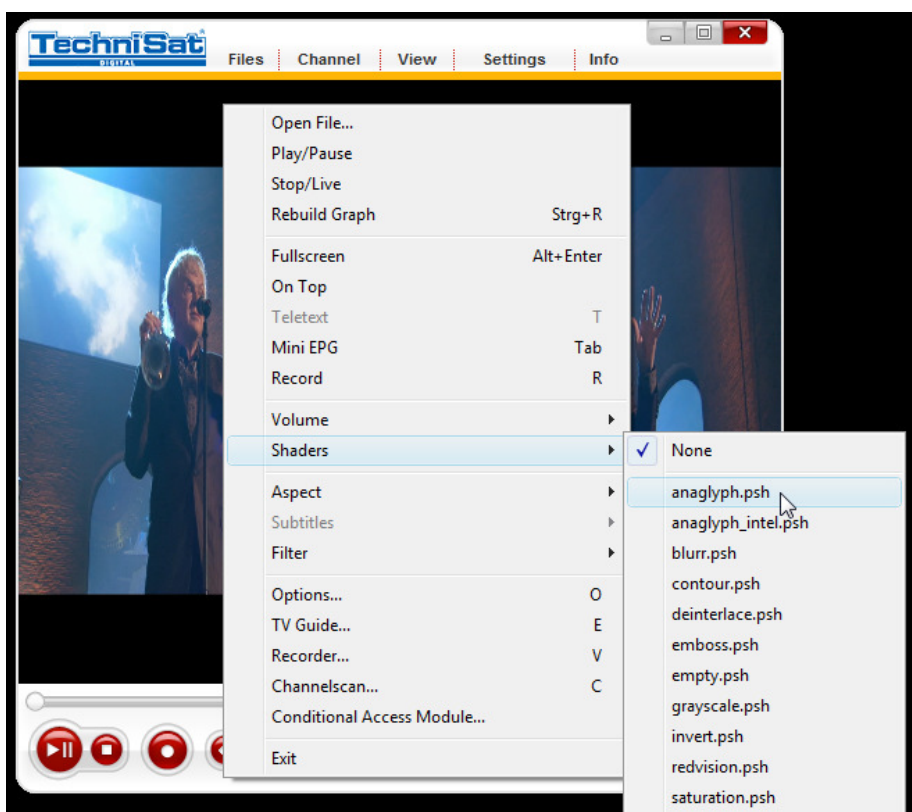




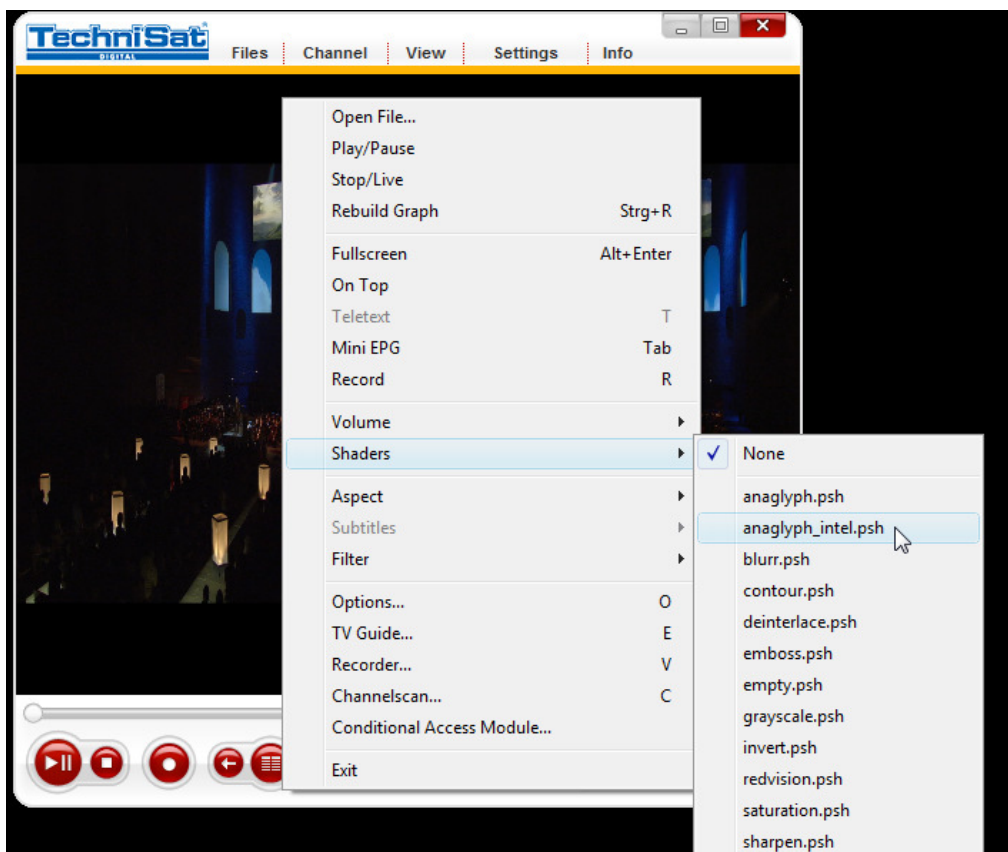
4) After installation please start the DVBViewer TE2 and tune to a 3D channel:



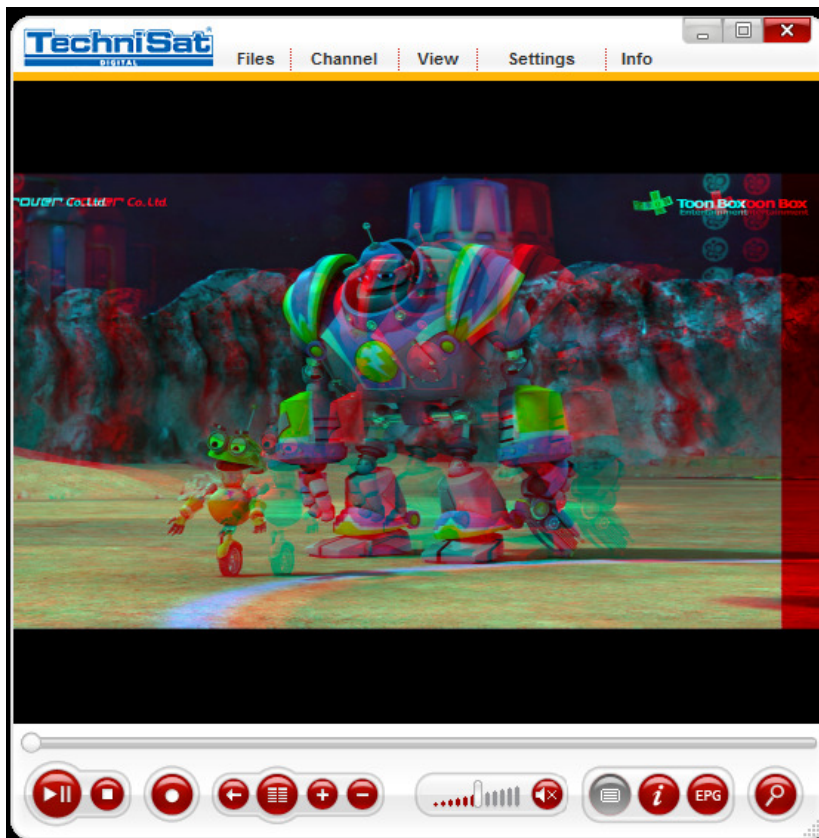
5) Right click and select “anaglyph.psh” from the menu entry “Shaders”:



Depending on the graphics card you are using you may get a better result by selecting the “anaglyph_intel.psh”.



6) Please use your anaglyph classes and enjoy the 3D effect:



7) For deactivating the 3D effect please right click and select "None" from the menu entry "Shaders":

