

How to install and use JohnDEC 2.x

1)Get the files

To use Free Dec you need 2 files and most update keys:

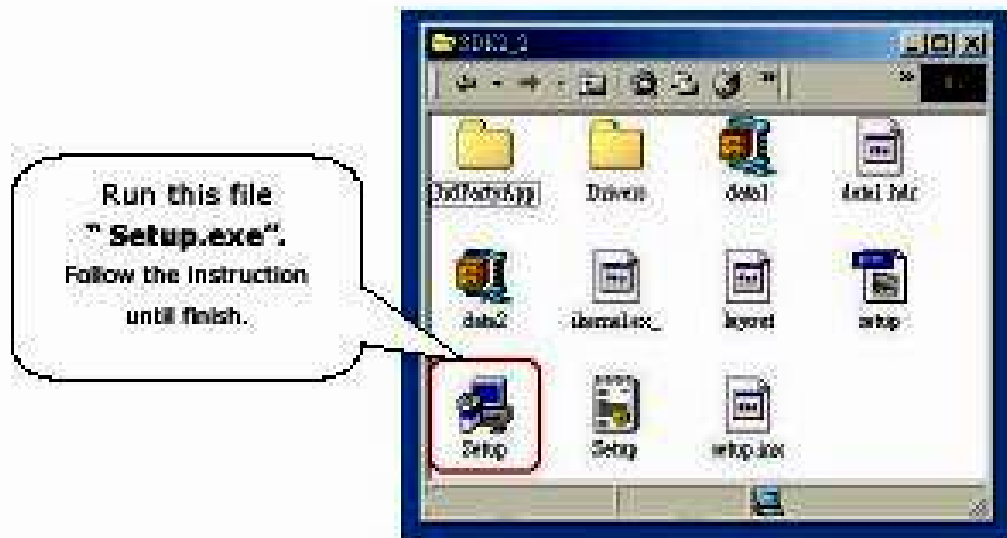
WinDTV SDK 2. Download from www.twintan.com

John Dec 2.X files As attached

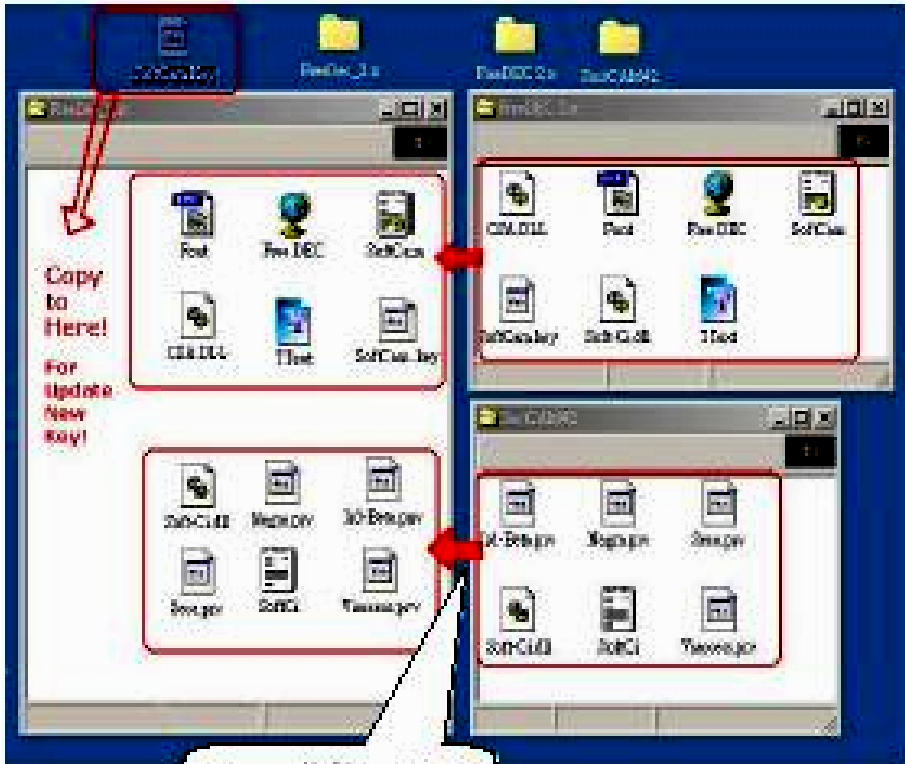
SoftCAM Key In www.freesat.tv.net/fo or <http://softcam.tforams.com>

2) How to install:

2.1) Install WinDST SDK 2.2:



There are 4 parts
download from the
Internet



Copy all files into the same folder

2.3) JohnDec folder

now we have everything!

Make a **shortcut** to
put on Desktop

Here we go!



3) Start john Dec 2.X

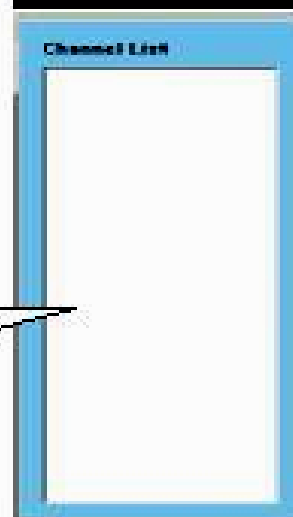
3.1) Start

Double Click **me** to
start johndec2.x



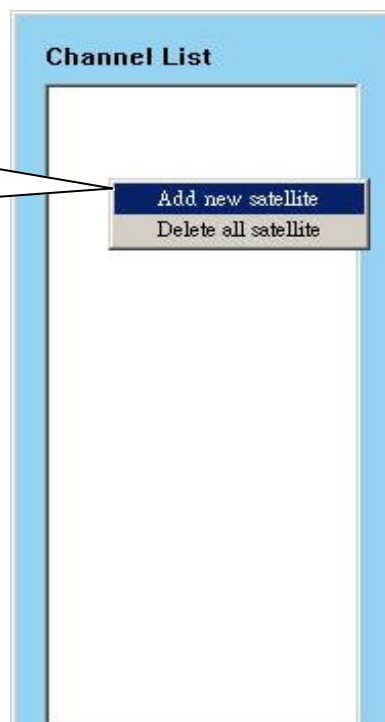
3.2) JohnDec 2.x user interface

At the very beginning,
it is a
blank **white board**!



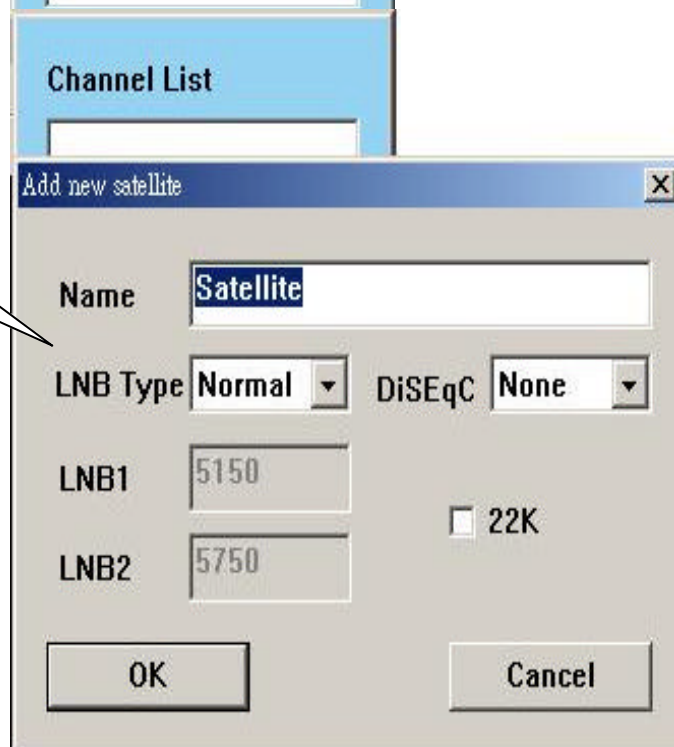
3.3) Add New Satellite

Use Mouse RIGHT button click on white board. Choose "Add new Satellite"



3.4) Input Satellite info

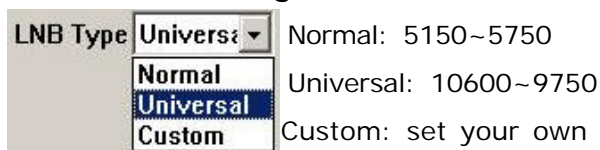
A Dialog box will show up. Input right info.



- 1. Name of Satellite:

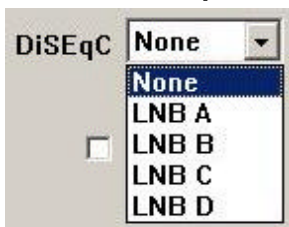
Just input the Name of The Satellite.

- 2. LNB Setting



(In Europe should use **Universal** LNB!!)

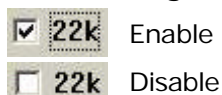
- 3. DiSEqC setting



None	LNB A	LNB B	LNB C	LNB D
Disable	LNB A	LNB B	LNB C	LNB D

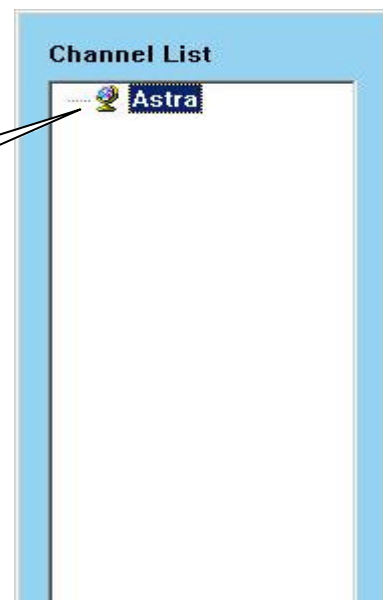
****TIP:** If your DVB-s card directly connect to satellite, please Just select " **None** " !

- 4. 22k (High-low band switch)



3.5) A Satellite is been Setup

The **"Astra"** is been setup successfully!



3.6) Add new Transponder

Mouse Right Button click on "Astra".

Choose
" Add new Transponder "



3.7) Setting Transponder

Name:

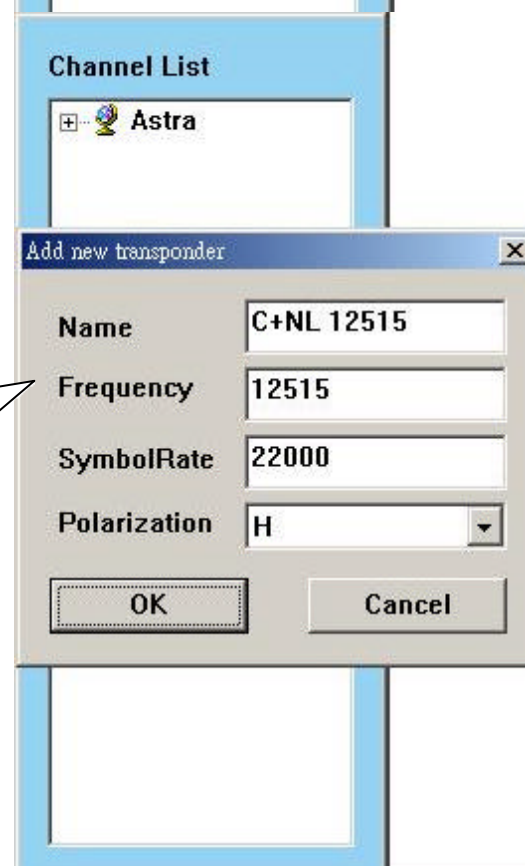
Whatever name you like!

Freq and S/R:

Check right info and input.

Polarization:

Horizontal or Vertical



**Tip:

For example, Freq only input 12515,

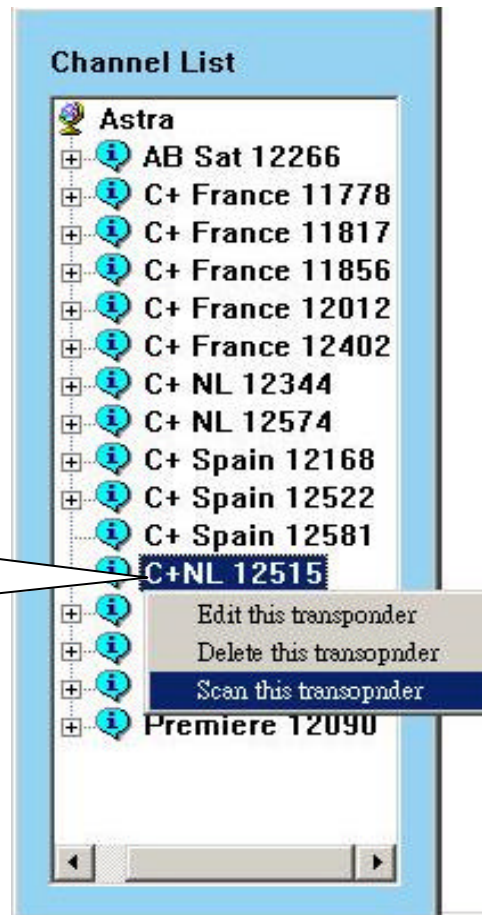
don't input 12515000. So is symbol rate.

Notice! Scan will fail with wrong Freq and S/R!

3.8) Scan Transponder

Here we successfully setup the TP named "C+NL 12515". Now we scan for it!

Mouse Right Button click on "C+NL 12515".
Choose **Scan this Transponder**






3.9) Scan Channels

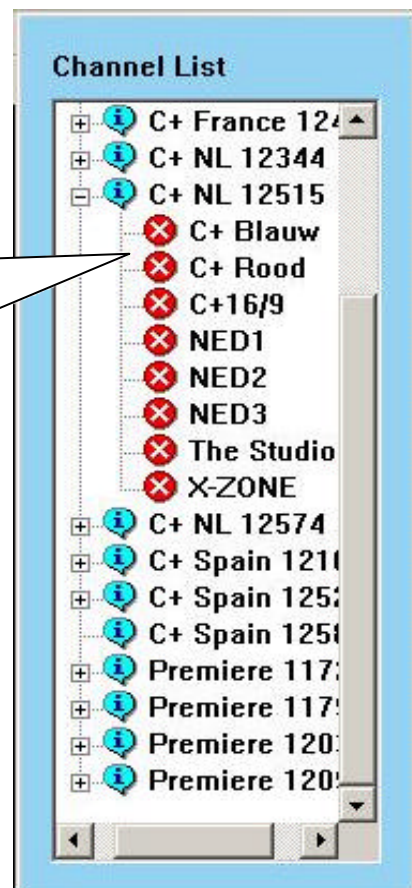
It takes several seconds while scanning.

Here we get several channels

** Tip Channel type

There are 3 channel types:

-  Scrambled Channel. (Pay Channels)
-  Free TV Channel (FTA Channels)
-  Digital Radio Channel



4) An Outlook of JohnDec 2.x

