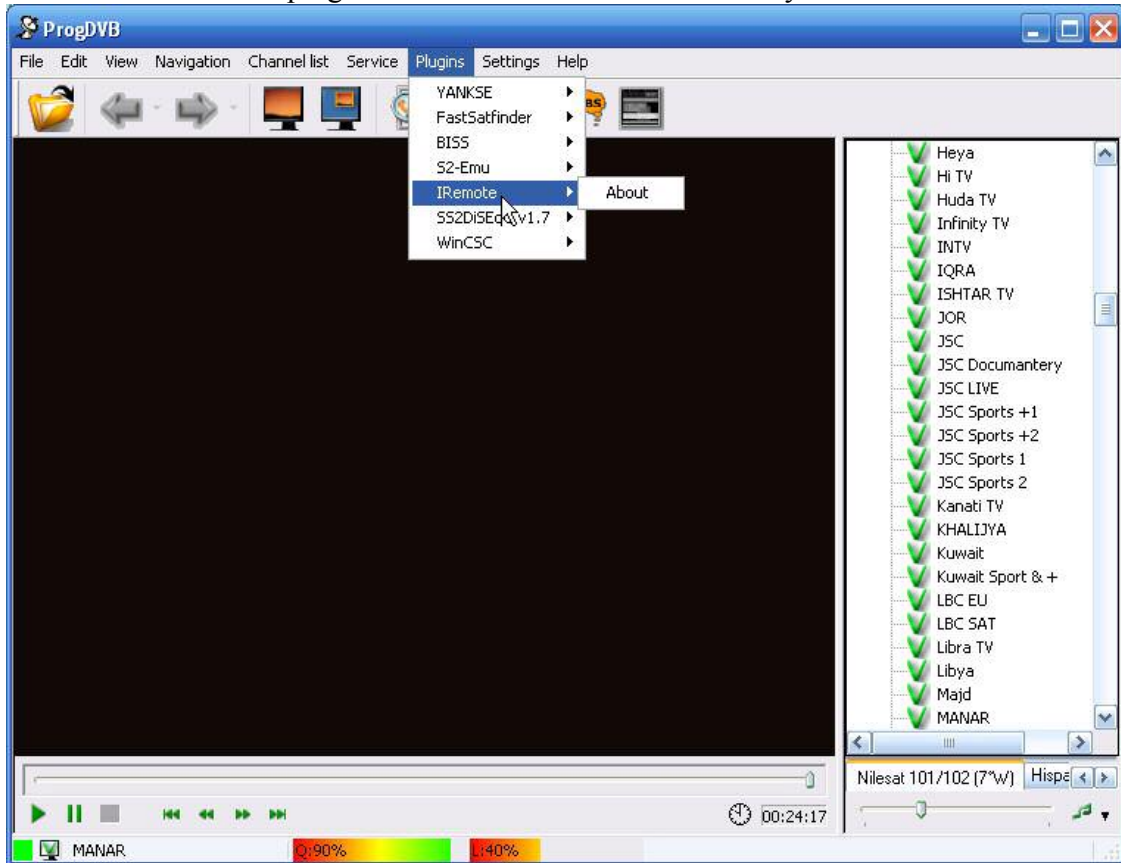


IRemote

ProgDVB Remote Control Support for Twinhan cards

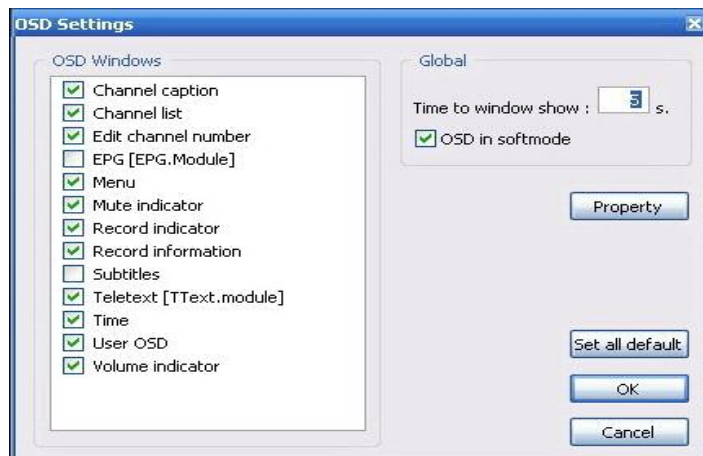
Installation

Put "IRemote.dll" file in the ProgDVB directory and run ProgDVB. You will see "IRemote" under the "plugins" menu and that means it's ready to use.



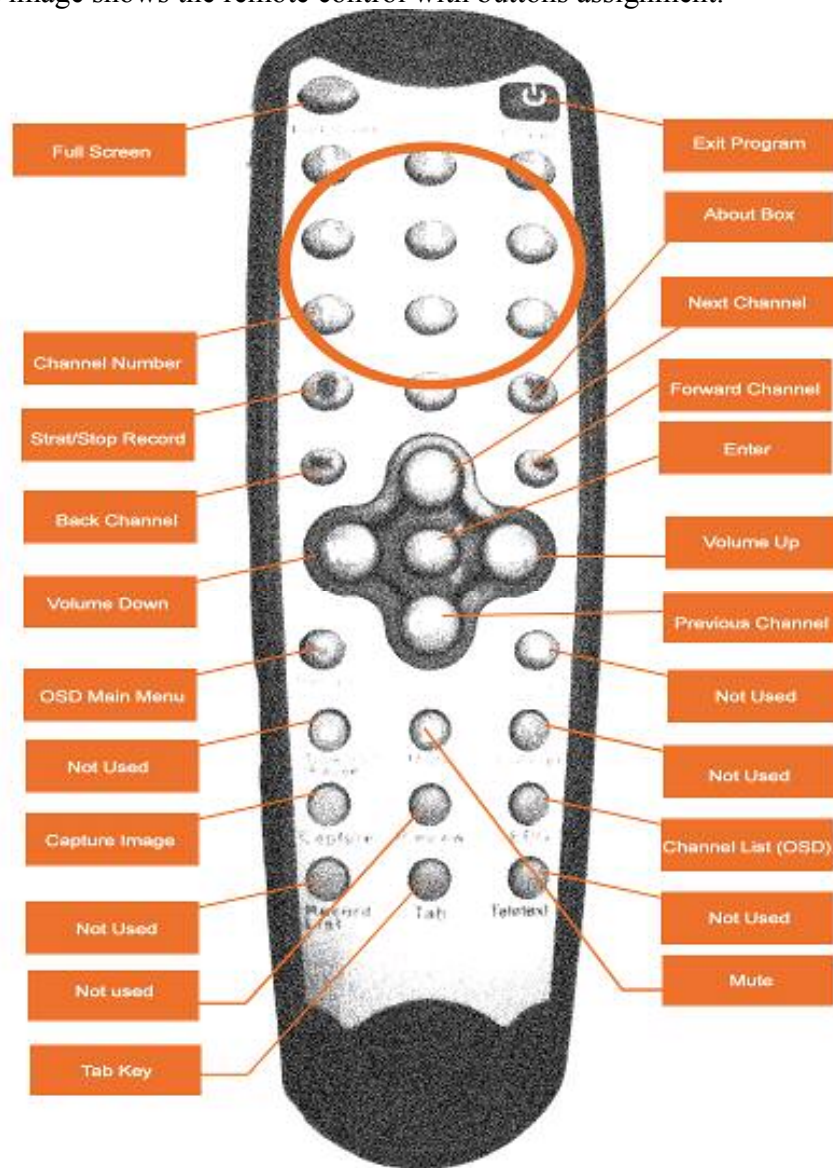
Usage

IRemote plugin doesn't need any other configurations to work, but I'd prefer you to enable OSD, because this will give you a better way to access ProgDVB from a distance. If you enable OSD, IRemote will give you on-screen messages like channel menu, channel information, or sound level indicator. You can enable OSD from "OSD Settings" in the "Settings" menu, then you can choose what OSD windows to show, and it's time to show like this image.



Controls

The next image shows the remote control with buttons assignment.



Note

There is a short delay in response of the IRemote.