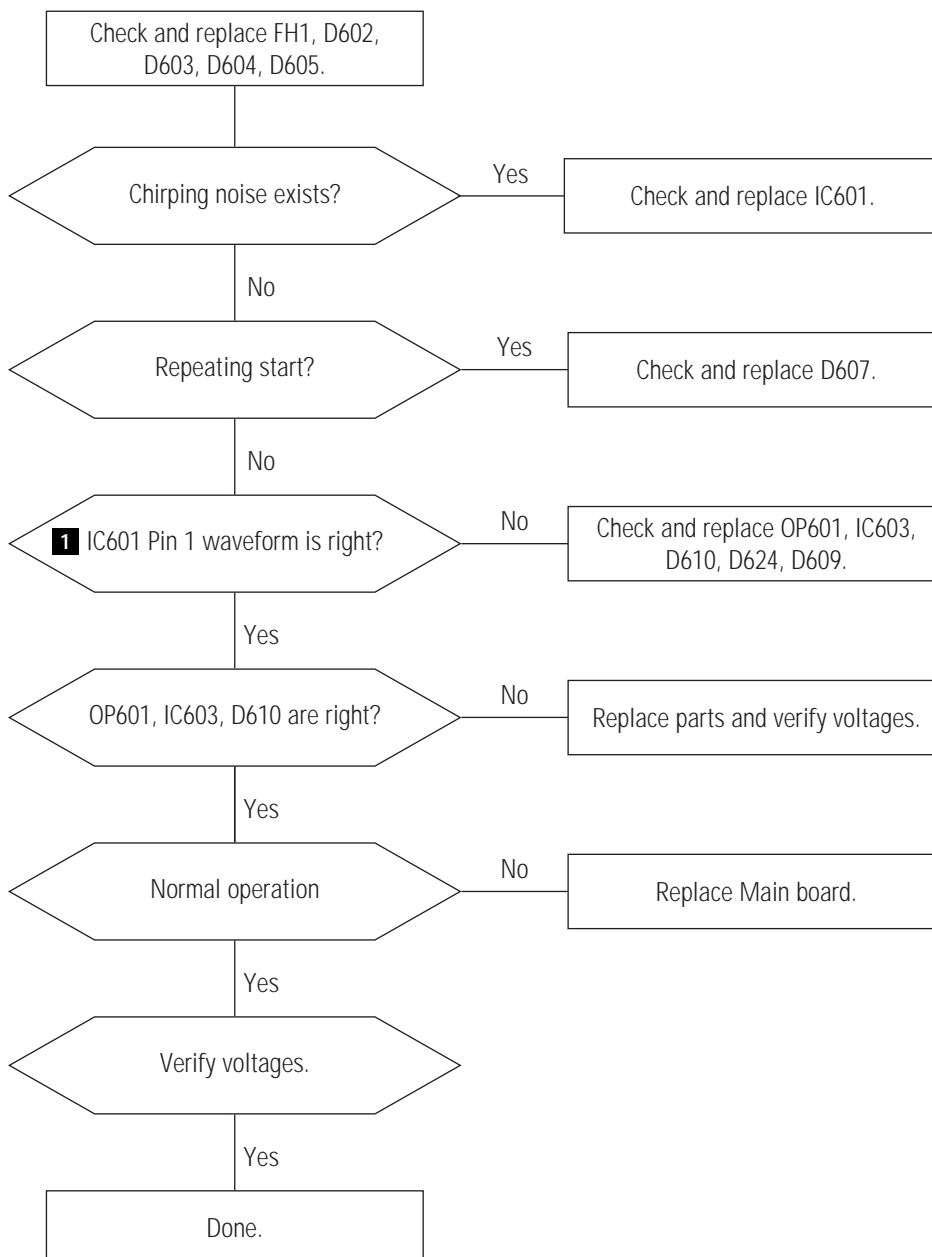


## 7 Troubleshooting

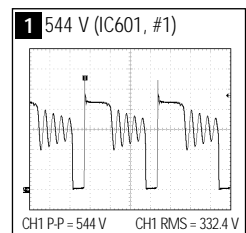
### 7-1 Parts Level Troubleshooting

- Notes:** 1. If a picture does not appear, fully rotate the brightness and contrast controls clockwise and reinspect.
2. Check the following circuits.
- No raster appears: Power circuit, Horizontal output circuit, H/V control circuit, and H/V output circuit.
  - High voltage develops but no raster appears: Video output circuits.
  - High voltage does not develop: Horizontal output circuits.

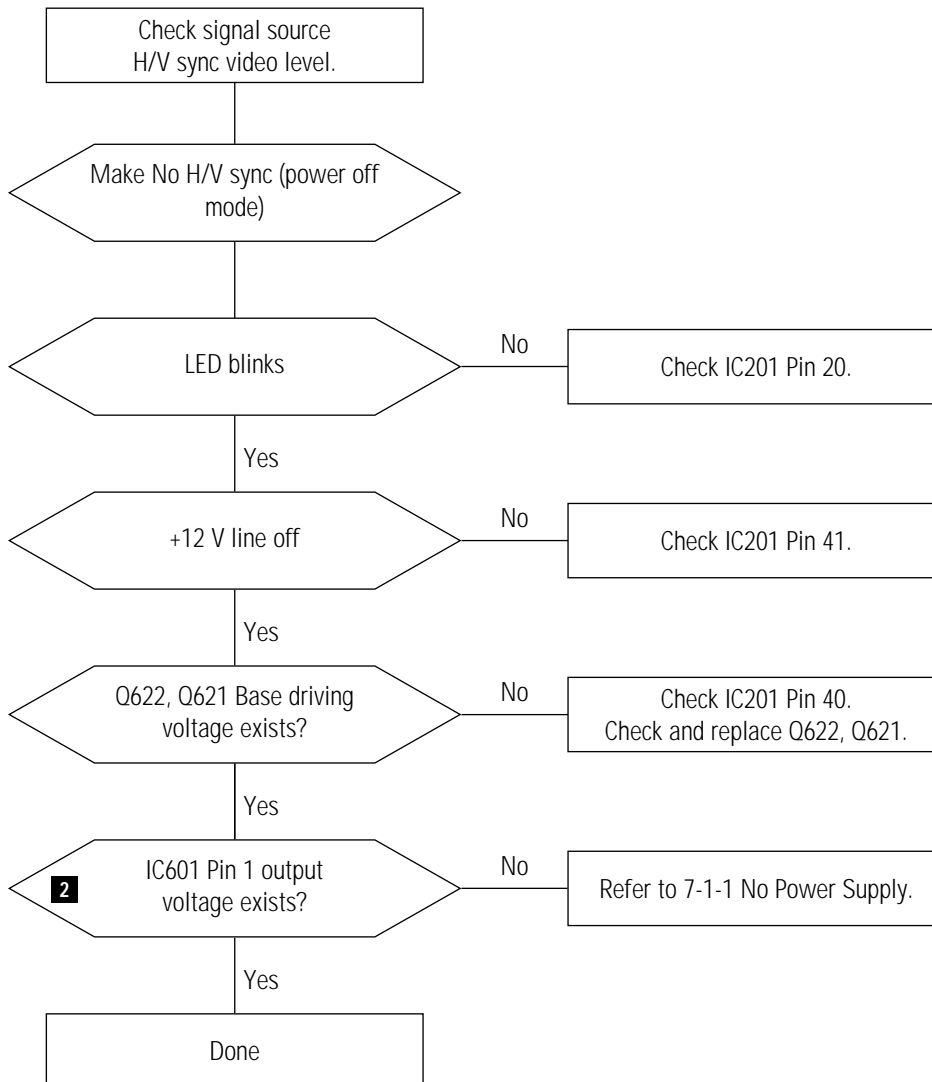
#### 7-1-1 No Power Supply



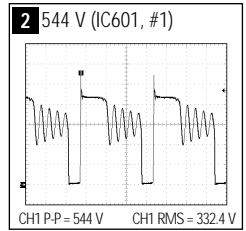
#### WAVEFORMS



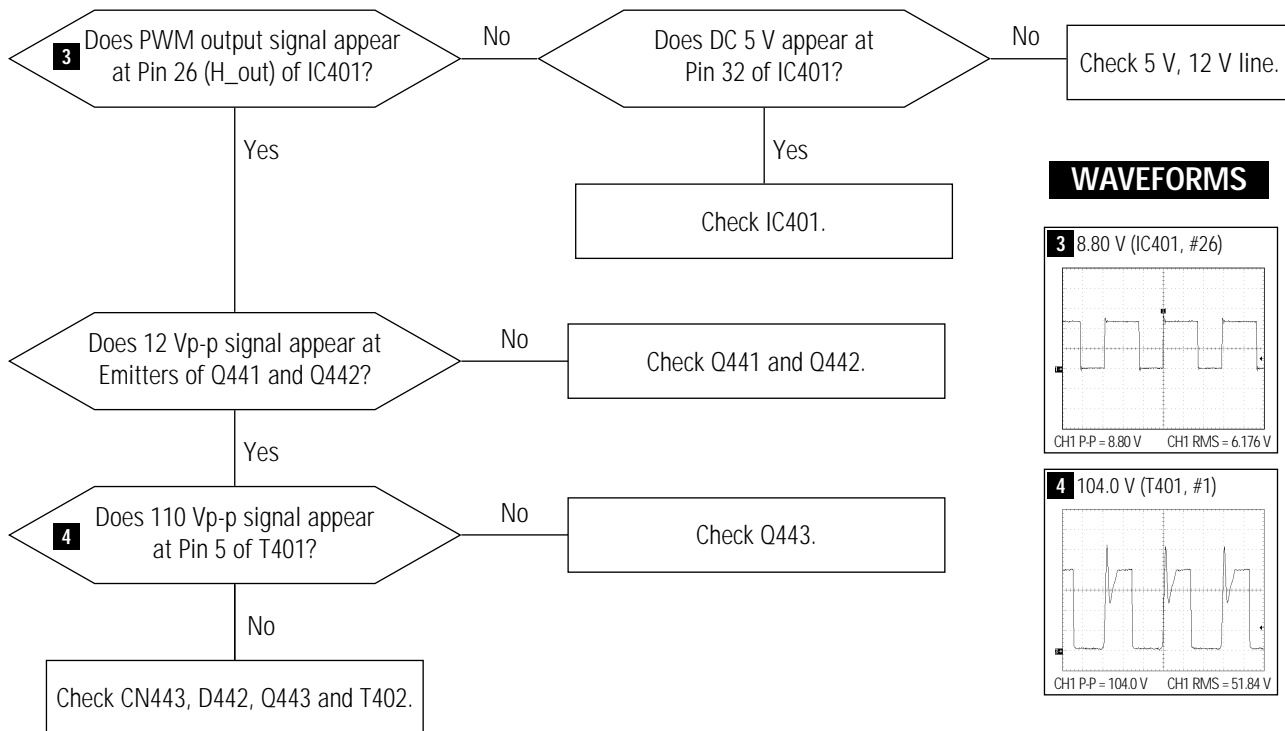
## 7-1-2 DPMS Failure



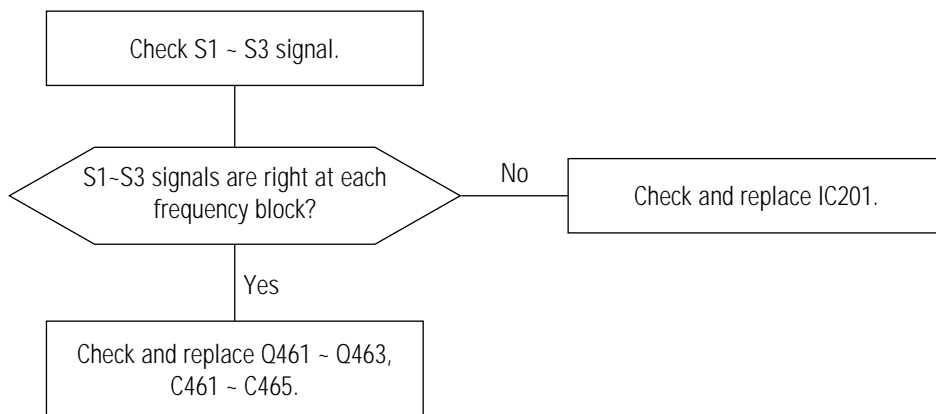
## WAVEFORMS

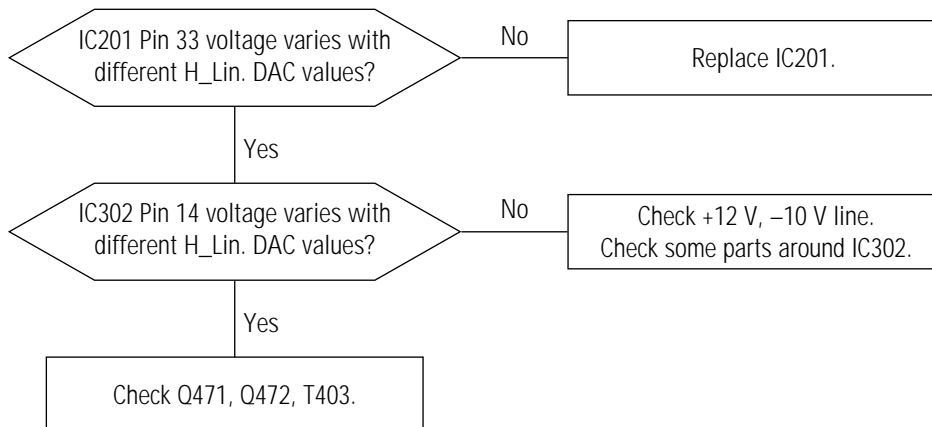
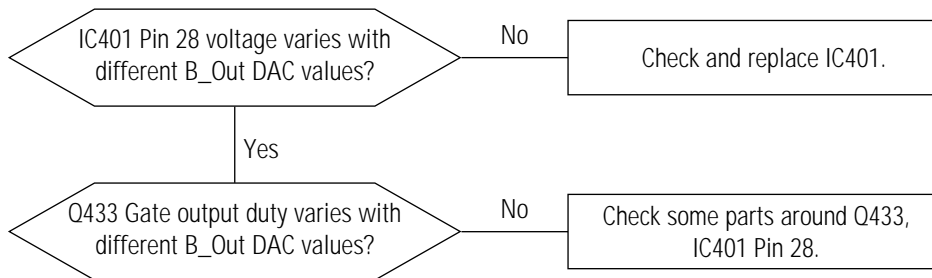
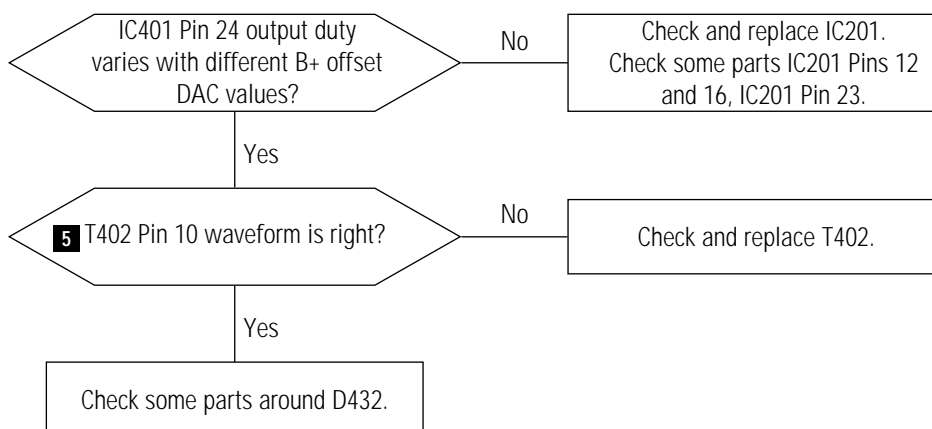
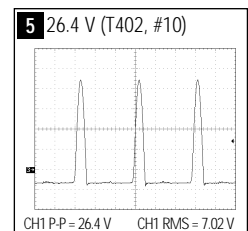


### 7-1-3 H\_Deflection Failure

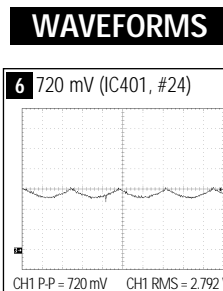
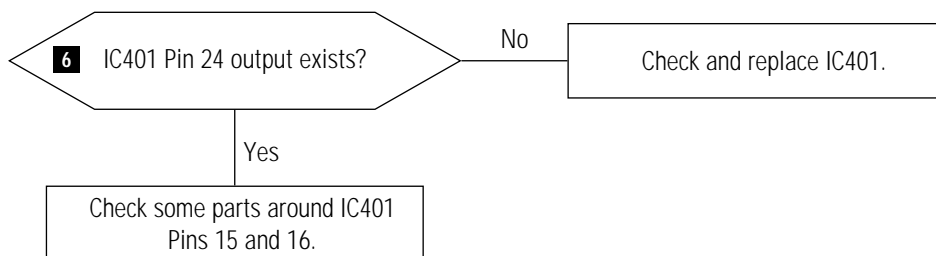


### 7-1-4 S Correction Failure

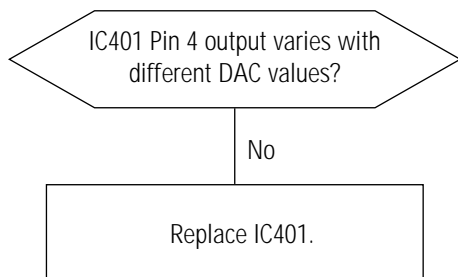


**7-1-5 H\_Lin. Failure****7-1-6 Invariable H\_Size****7-1-7 Abnormal H\_Size****WAVEFORMS**

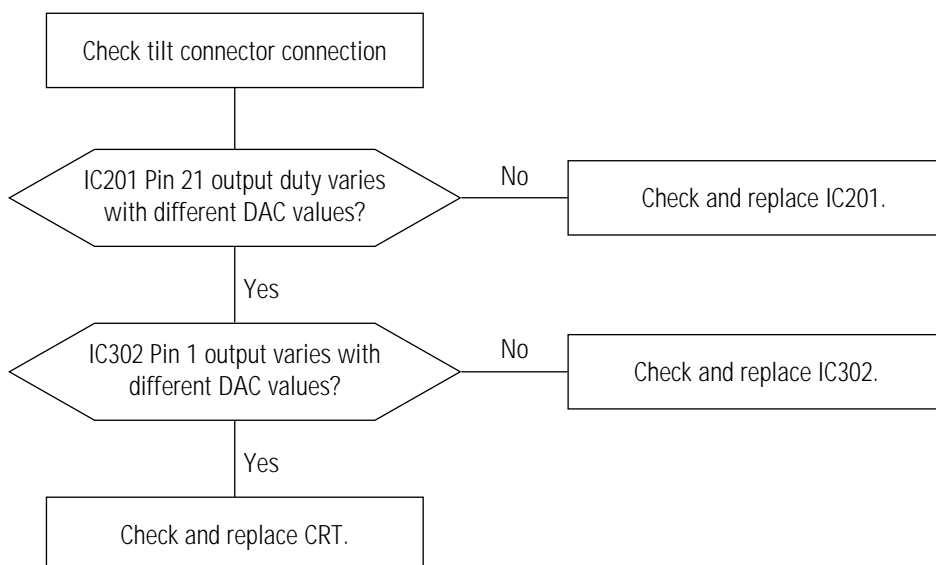
### 7-1-8 Side Pin or Trap Failure

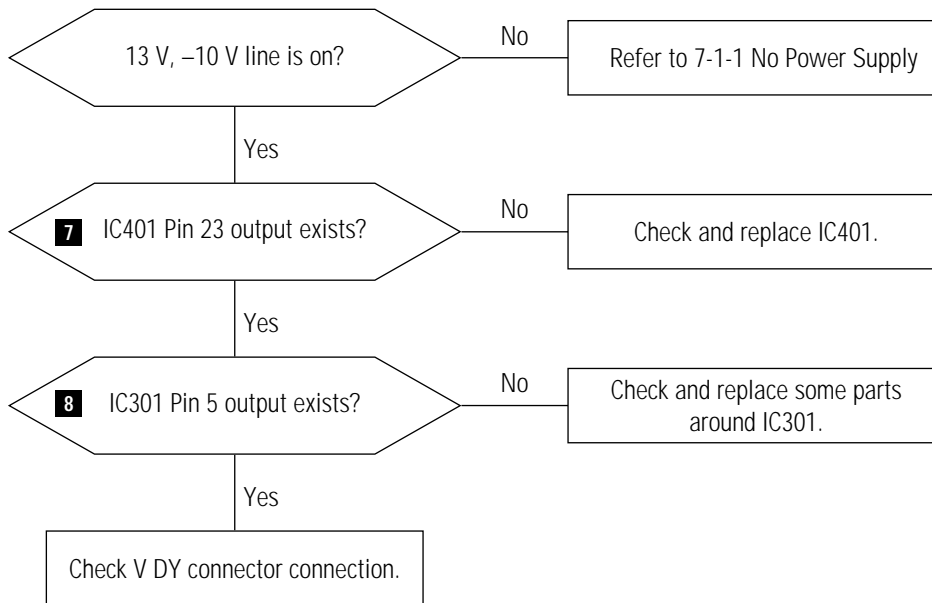
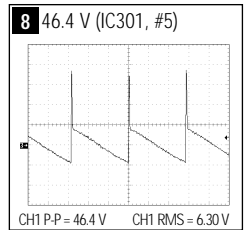
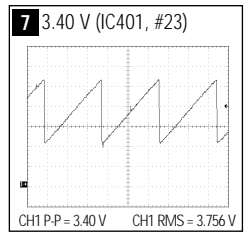
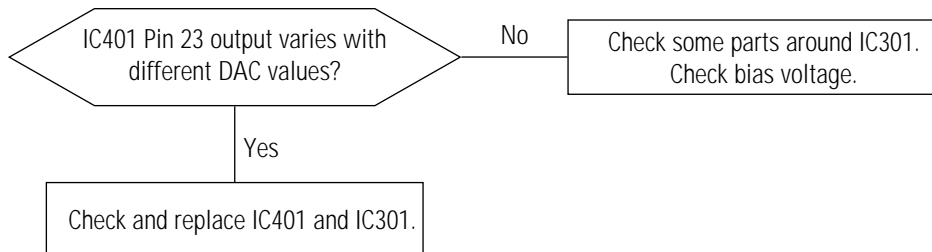


### 7-1-9 Para. or Pin Balance Failure

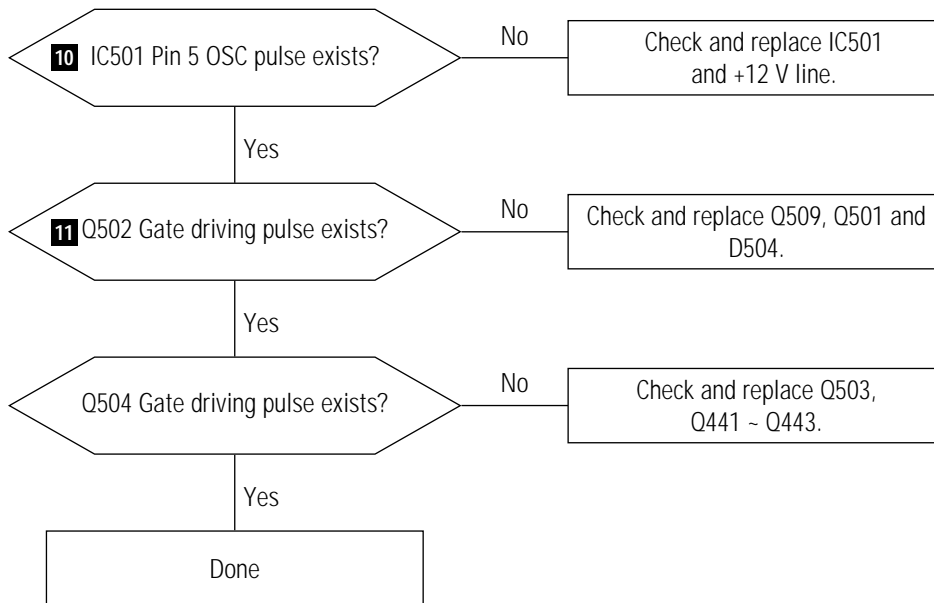


### 7-1-10 Tilt Failure

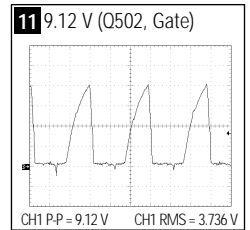
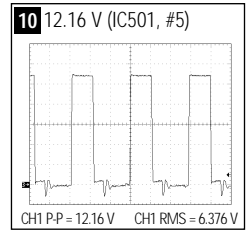


**7-1-11 V Deflection Failure****WAVEFORMS****7-1-12 V Size or Pos. Variation Failure**

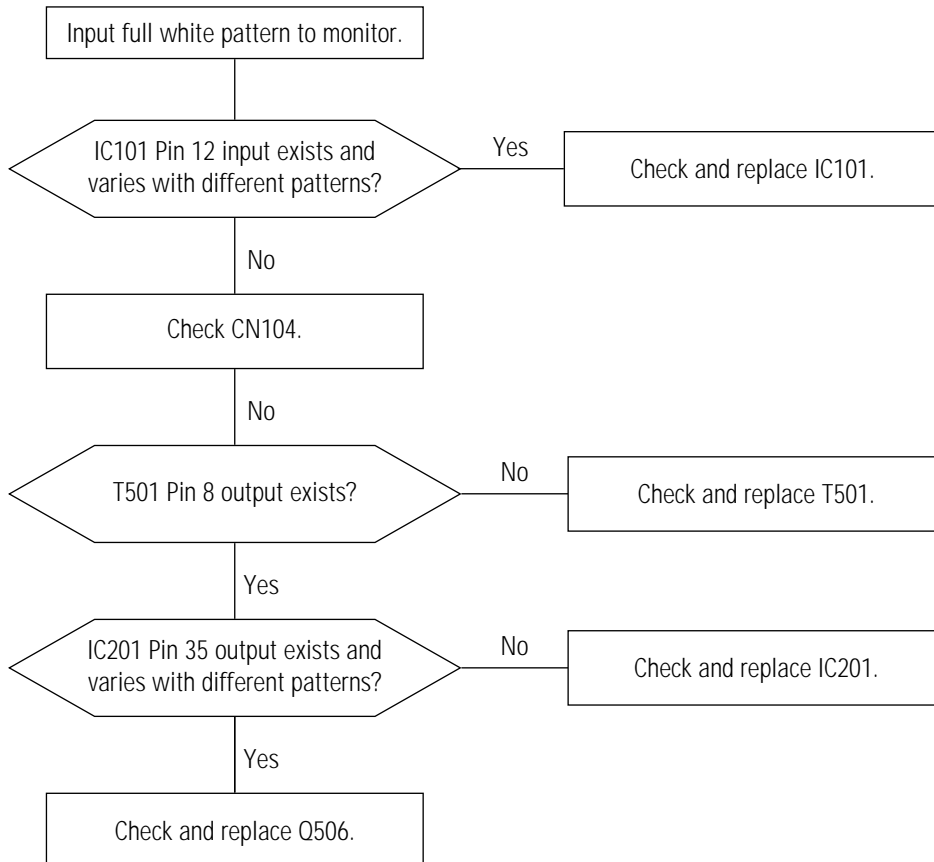
### 7-1-13 High Voltage Failure



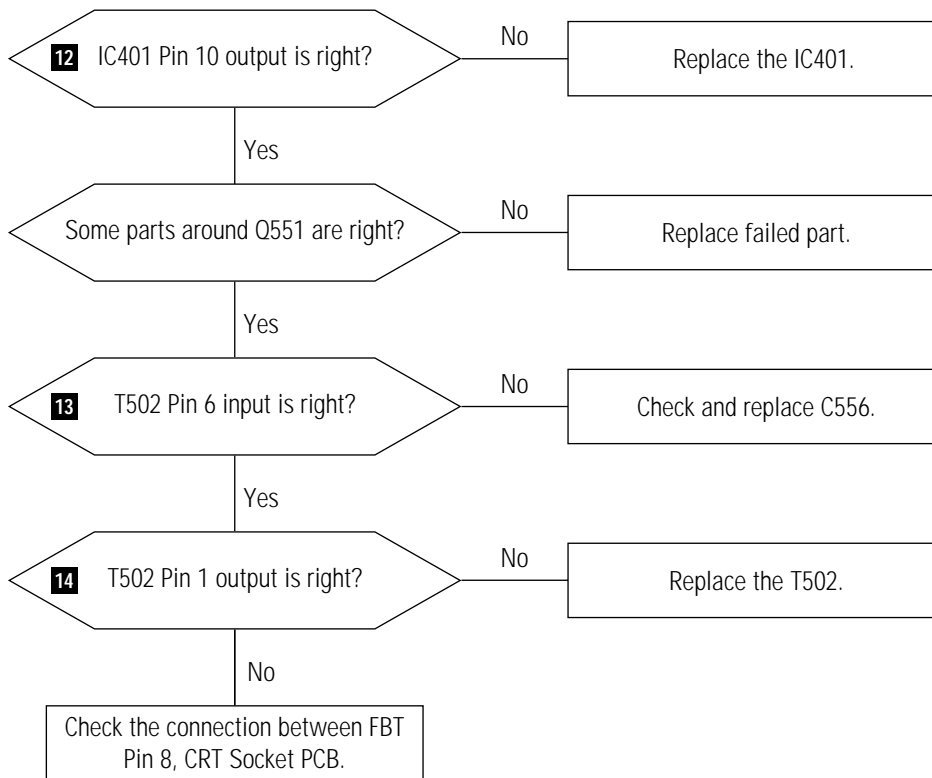
#### WAVEFORMS



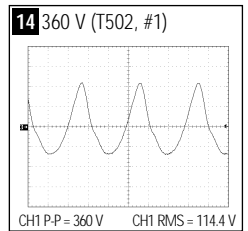
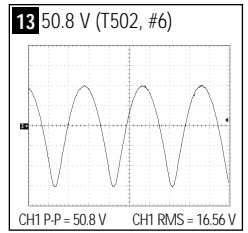
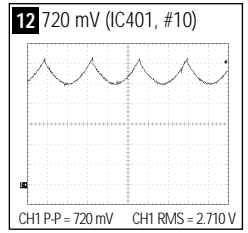
### 7-1-14 ABL Failure



## 7-1-15 Dynamic Focus Failure

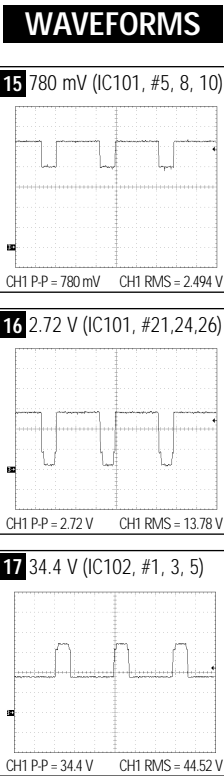
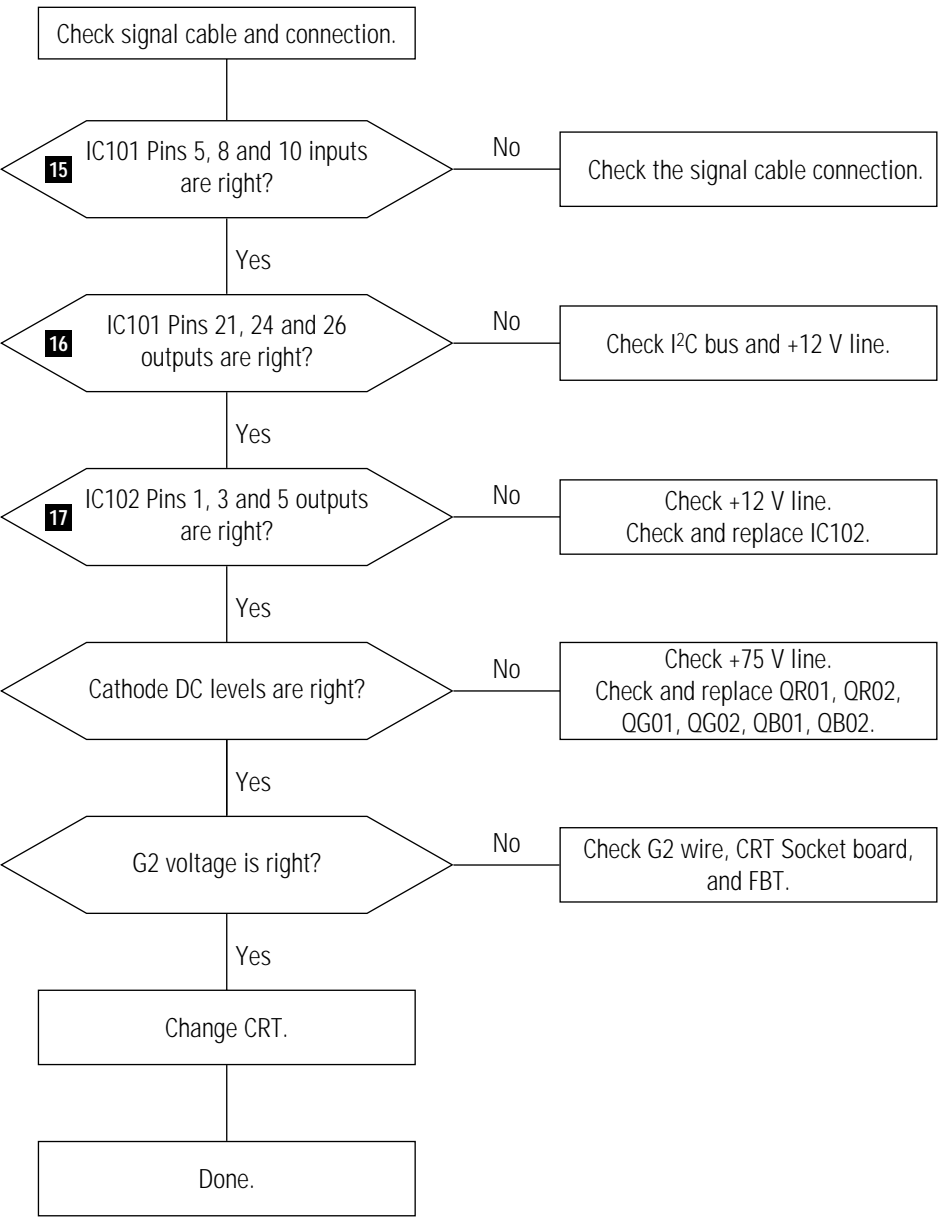


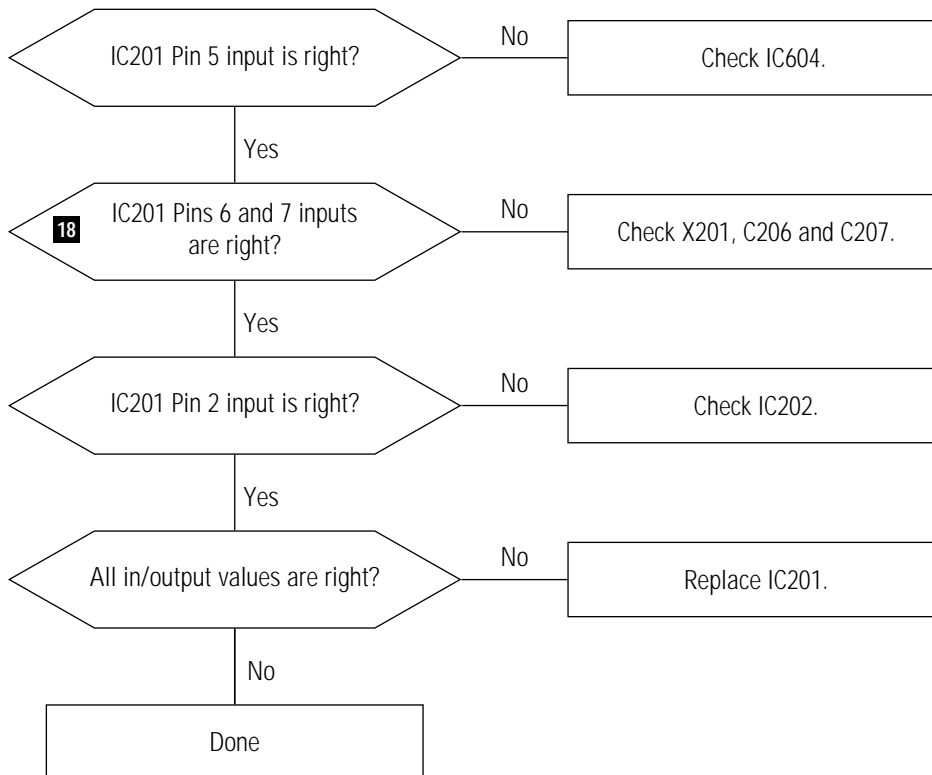
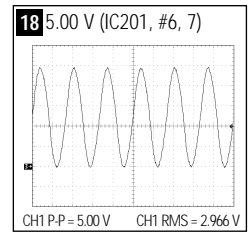
## WAVEFORMS



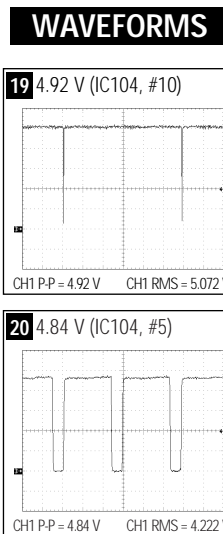
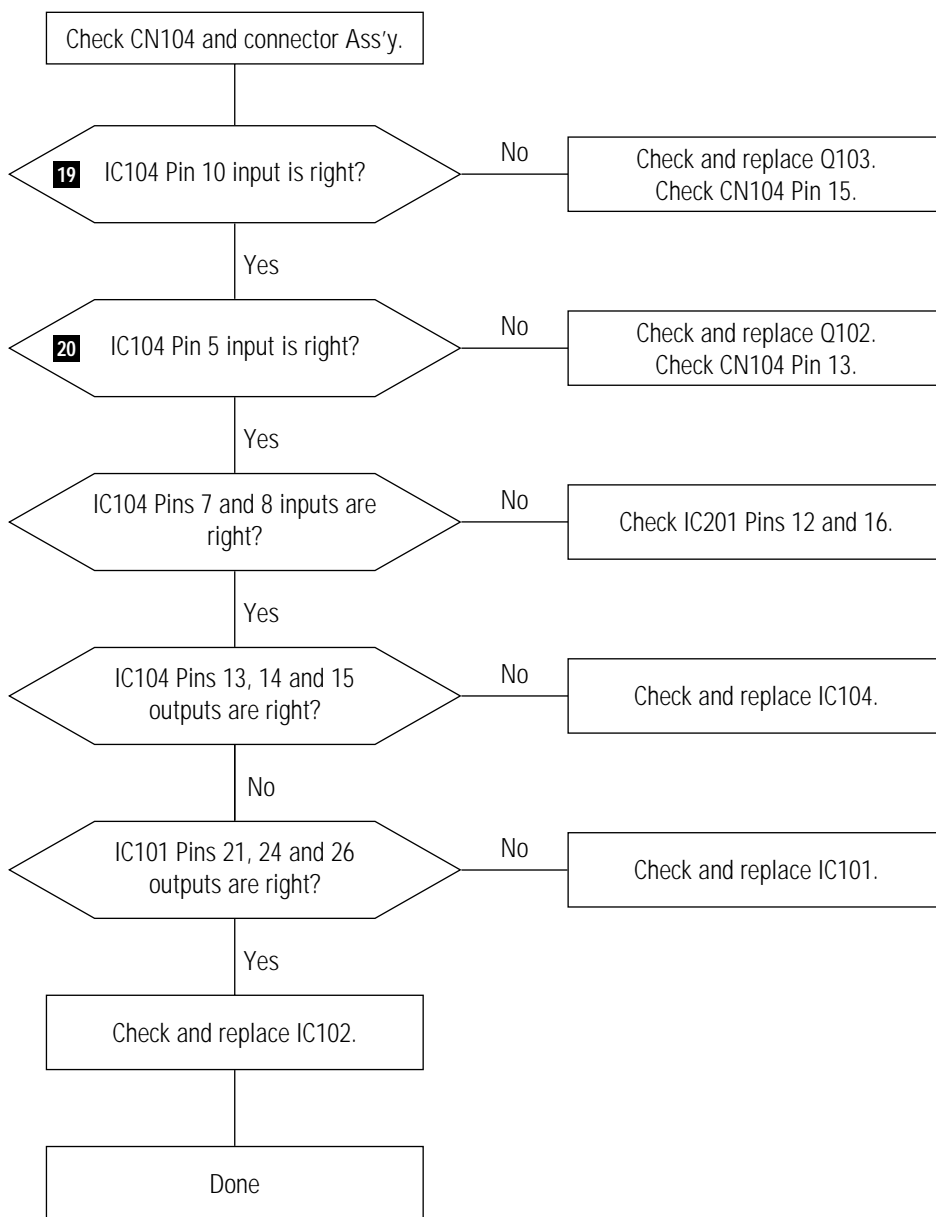


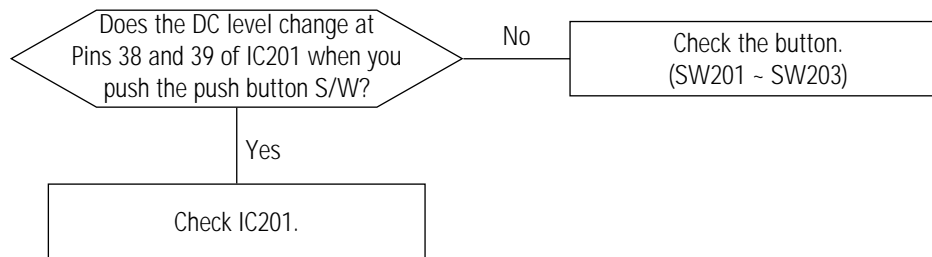
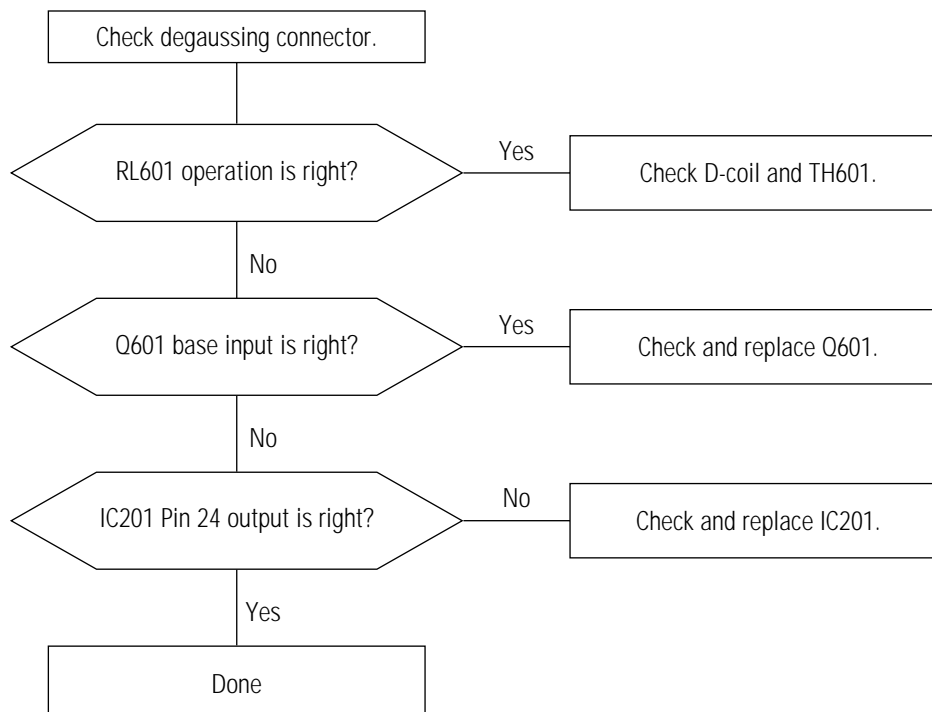
# 7-1-16 No Video



**7-1-17 Micom Failure****WAVEFORMS**

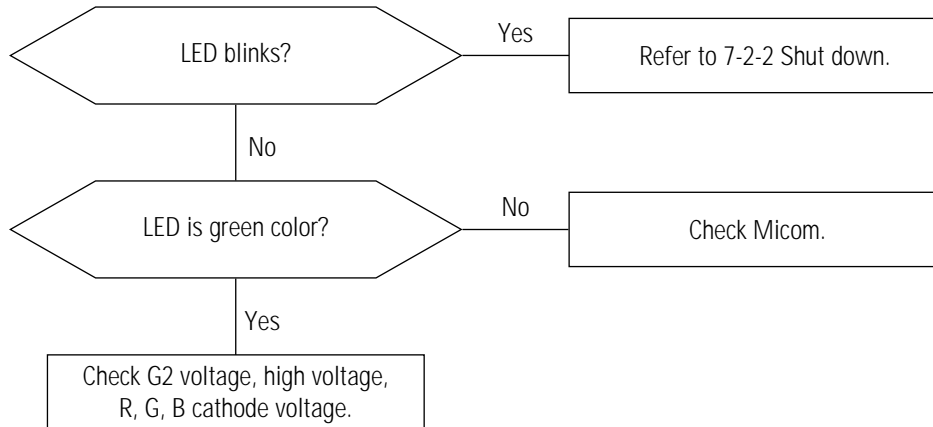
# 7-1-18 OSD Failure



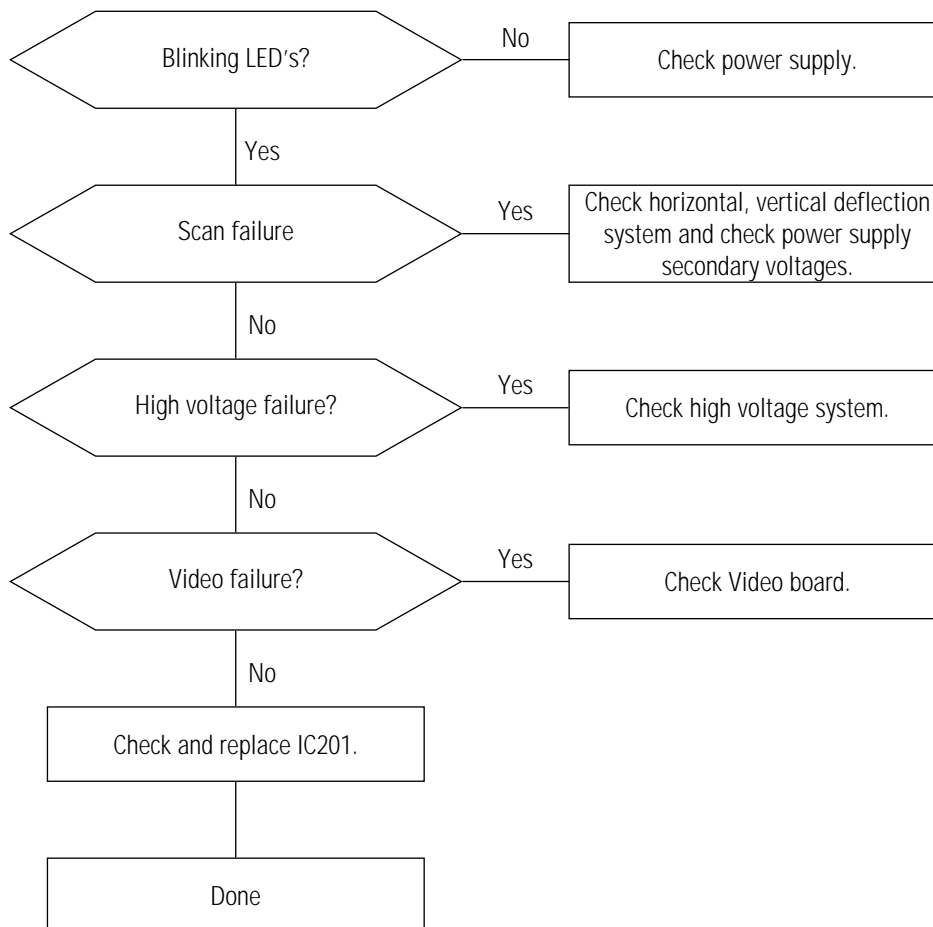
**7-1-19 User Control Failure****7-1-20 Degaussing Failure**

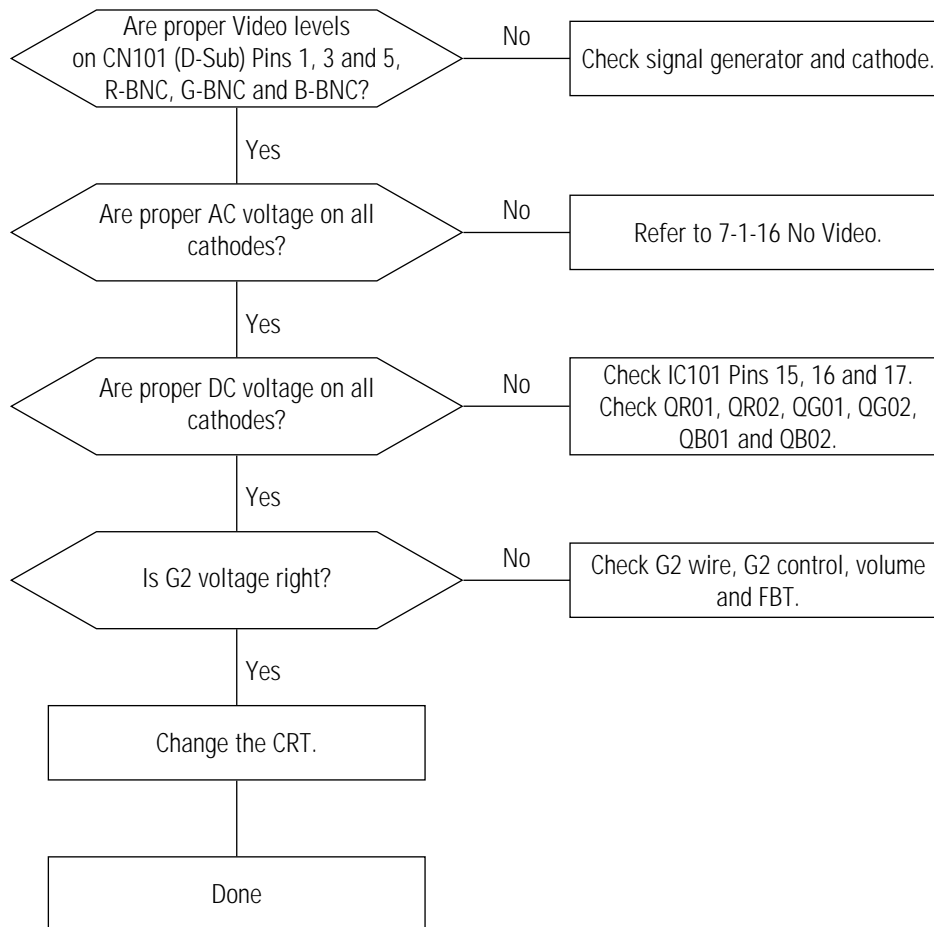
## 7-2 General Troubleshooting

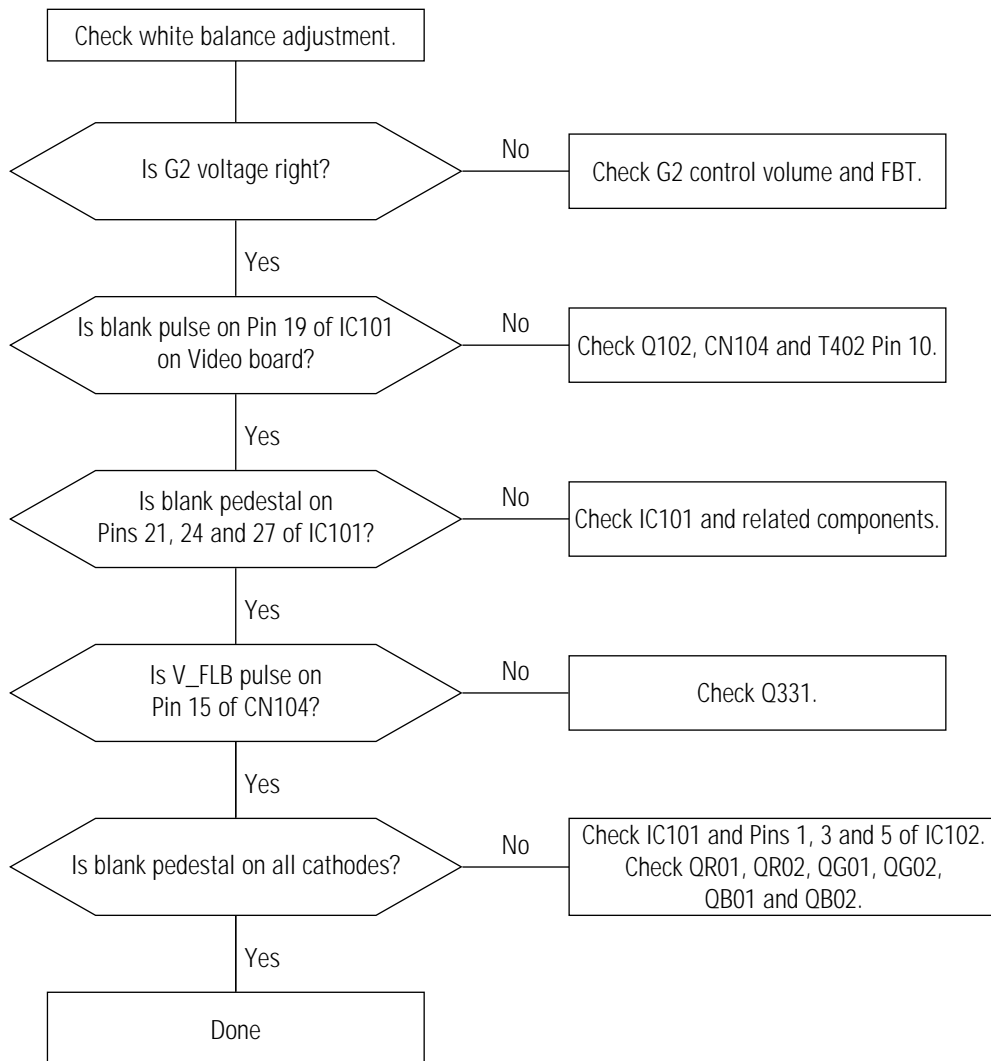
### 7-2-1 No Picture

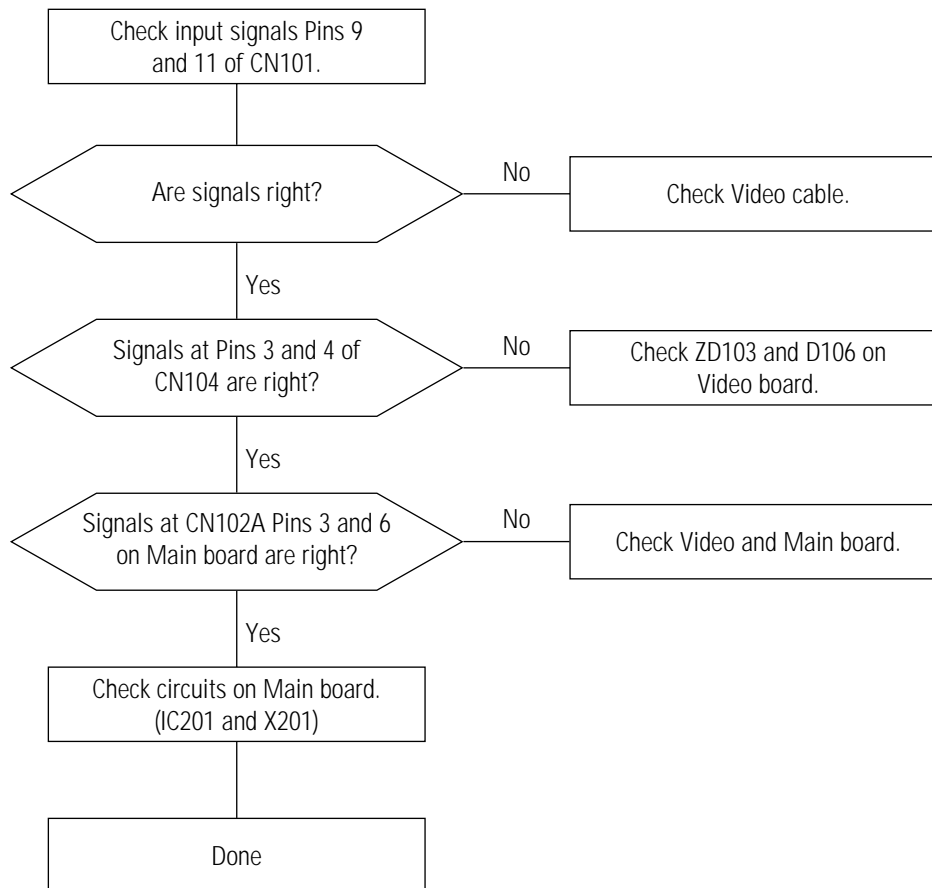


### 7-2-2 Shut Down

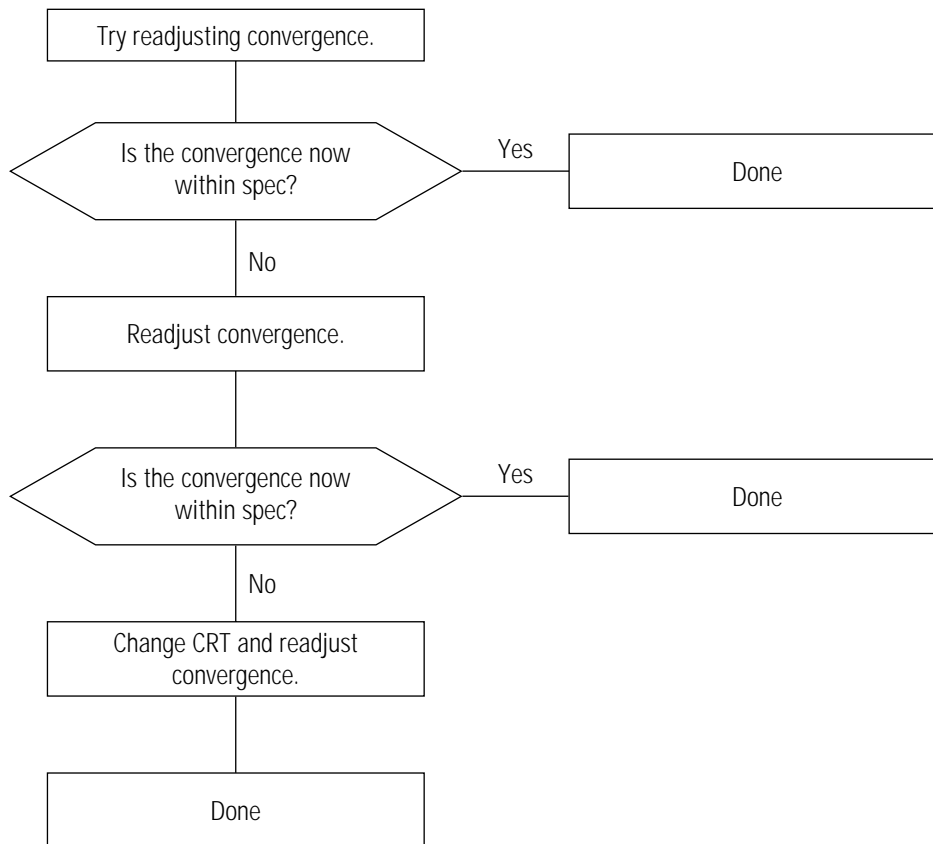


**7-2-3 Missing Color**

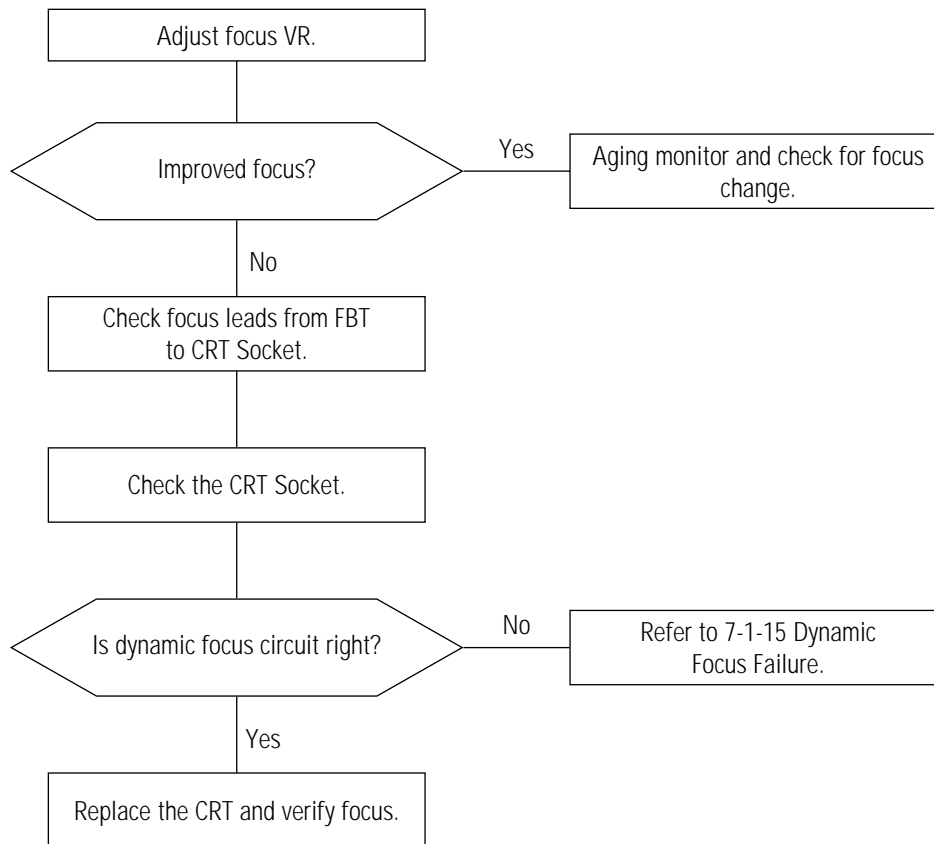
**7-2-4 Visible Retrace**

**7-2-5 Unsynchronized Image**



**7-2-6 Misconvergence**

### 7-2-7 Poor Focus



### 7-2-8 Purity Failure

